



Sidney Road, TW1

£815,000

Located in the heart of St Margarets village, is this fantastic first floor split-level three bedroom Edwardian maisonette. Well-presented throughout, this property comes with access to the garden and a share of the freehold. This property is not to be missed.

Sidney Road is a well regarded tree-lined residential street in the heart of St Margarets village. Moor Mead Park is at the end of road.

St Margarets village with its train station, cafes, restaurants and shops is only 0.2 miles away. Marble Hill Park and the River Thames are also close by. The property is excellently located for outstanding primary and secondary schools.

Features

- Edwardian Maisonette
- Spacious Reception
- Large Kitchen
- Three Bedrooms
- Garden
- No Onward Chain

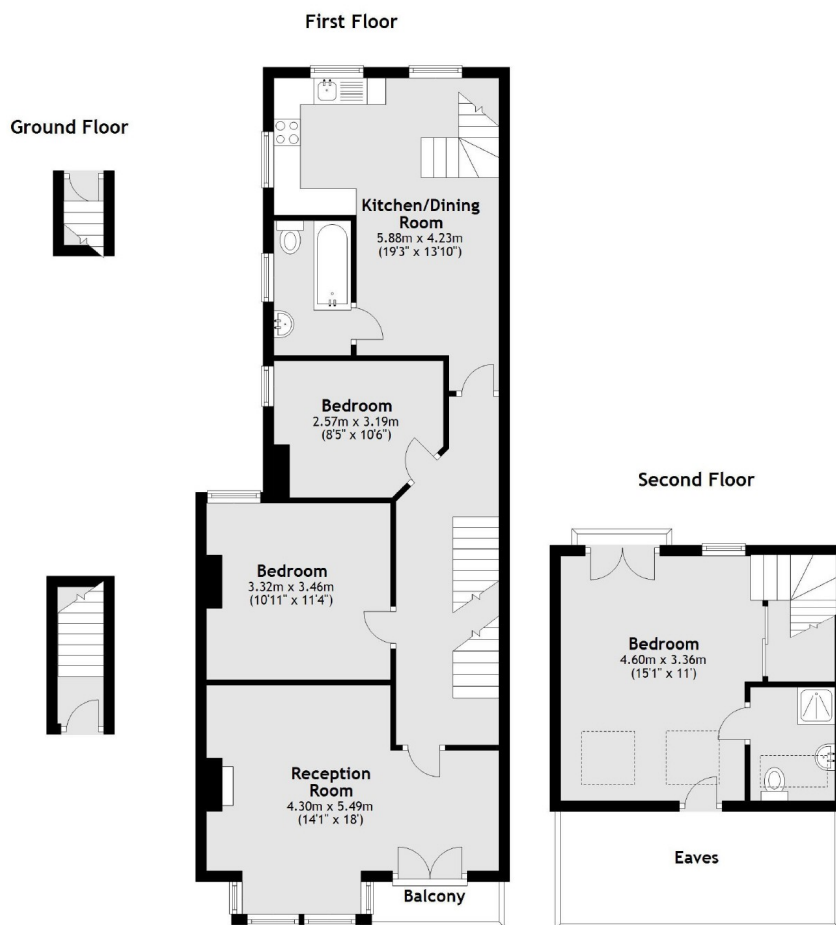


Sidney Road, TW1

This spacious maisonette offers well proportioned and light accommodation with three bedrooms, two bathrooms and a large kitchen/dining room. The reception room impresses with a lovely large bay window and access to a balcony overlooking the tree lined road.



Sidney Road, St Margarets, TW1



Main area: Approx. 100.3 sq. metres (1079.8 sq. feet)
Plus balconies, approx. 2.1 sq. metres (22.9 sq. feet)

Dexters

St Margarets
1 Chertsey Road
St Margarets
TW1 1LR
Sales
020 8744 9400

Energy Rating: C. We aim to make our particulars both accurate and reliable. However they are not guaranteed; nor do they form part of an offer or contract. If you require clarification on any points then please contact us, especially if you're traveling some distance to view. Please note that appliances and heating systems have not been tested and therefore no warranties can be given as to their good working order.

 **RICS** | Regulated
Estate Agent
and Letting Agent

[dexters.co.uk](https://www.dexters.co.uk)