



Richmond Road, TW1

£675,000

This exceptional first floor conversion apartment, set in the heart of East Twickenham, is sure to impress. With two double bedrooms, high ceilings and off-street parking this property is a rare find.

Located on Richmond Road in the heart of East Twickenham everything is on your doorstep from shops, the River Thames, Marble Hill Park and St Margarets Train Station. Richmond town centre and train station is also close by, just over Richmond Bridge, with its bustling high street and fast trains to London Waterloo.

Features

- Period Conversion
- Two Double Bedrooms
- Beautifully Presented
- Period Features
- Off-Street Parking
- Share Of Freehold



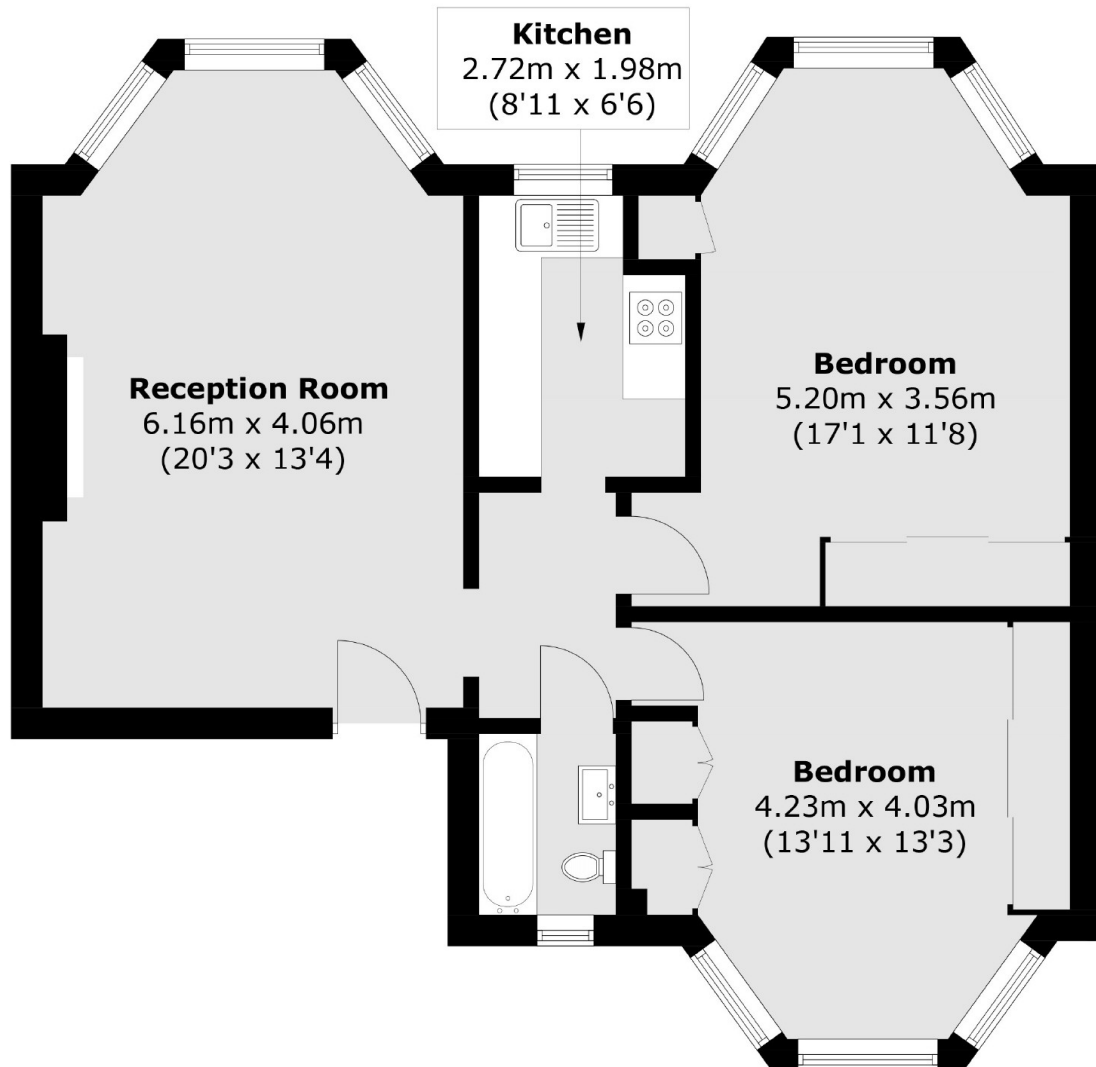
Richmond Road, TW1

As you enter the property, you are greeted by a spacious reception room featuring high ceilings and large wooden sash windows flooding the room with natural light. The original fireplace and intricate cornices are a true highlight of this room. There are two well proportioned double bedrooms, both featuring bespoke fitted wardrobes and solid wood flooring. The property offers picturesque views over mature trees and greenery, creating a sense of privacy.

Further benefits include a share of the freehold and convenient off-street parking.



Richmond Road, Twickenham, TW1



Total area (approx.): 69.3 sq. m (745.9 sq. ft)

Dexters

St Margarets
1 Chertsey Road
St Margarets
TW1 1LR
Sales
020 8744 9400

Energy Rating: D. We aim to make our particulars both accurate and reliable. However they are not guaranteed; nor do they form part of an offer or contract. If you require clarification on any points then please contact us, especially if you're traveling some distance to view. Please note that appliances and heating systems have not been tested and therefore no warranties can be given as to their good working order.

 **RICS** | Regulated
Estate Agent
and Letting Agent

[dexters.co.uk](https://www.dexters.co.uk)