



## Busch Close, TW7

### £299,999

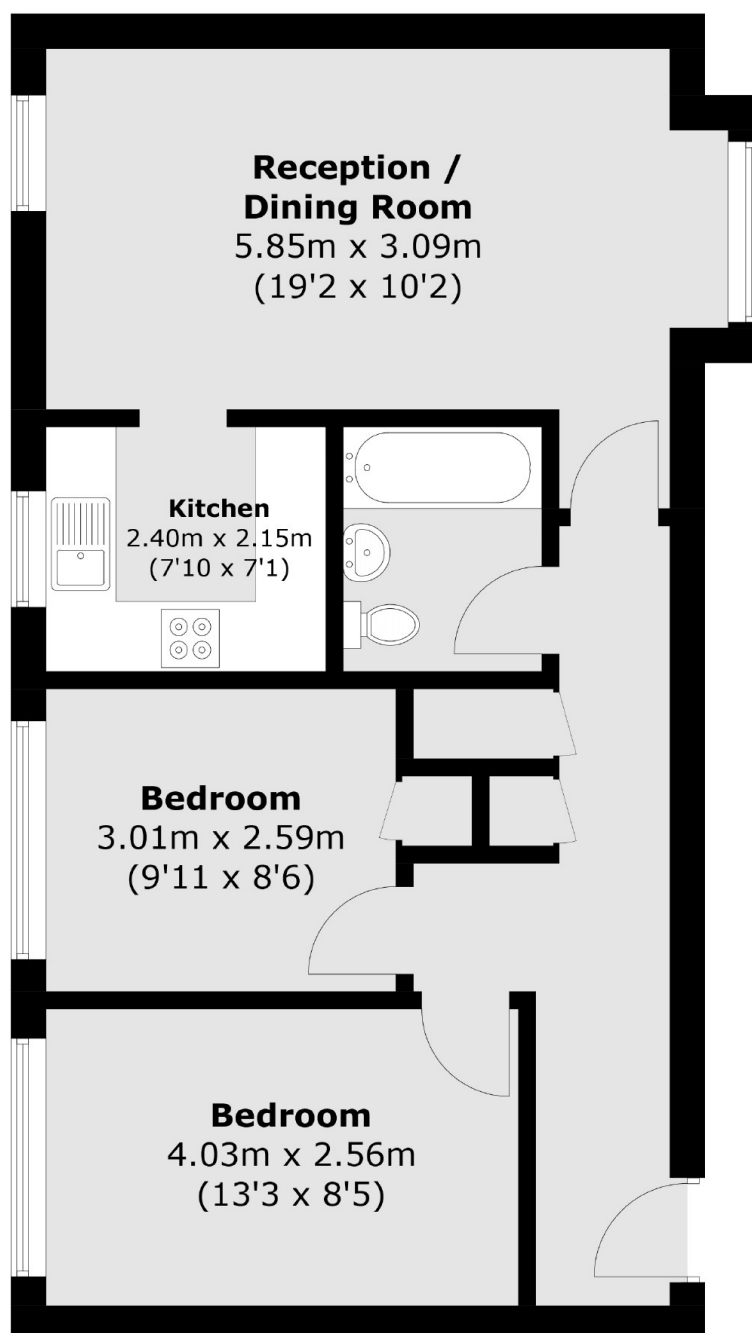
A well presented two double bedroom apartment within a modern gated development and offered with no onward chain. The property comes with an allocated parking space and a video entry phone system.

Catherine House is situated opposite Syon Park, with Syon Lane Station only 0.4 miles away with its trains to London Waterloo and half a mile from the River Thames.

### Features

- Modern Gated Development
- Bright Reception Room
- Two Double Bedrooms
- Nice Bathroom
- Allocated Parking Space
- Close To Syon Park

# Busch Close, Isleworth, TW7



Total area (approx.): 58.7 sq. m (631.8 sq. ft)