



**Richmond Road, TW1**  
**£588,000**

**Dexters**



## Richmond Road, TW1

This bright and spacious top floor two/three bedroom apartment enjoys beautiful panoramic roof top views over East Twickenham. This purpose built property comes with a long lease, unallocated off-street parking, residents permit parking and a bike store as well as a useful lift service. This property is not to be missed.

As you enter into the property there is a large spacious hallway, two double bedrooms, a modern fitted bathroom and a kitchen. The third double bedroom is currently arranged as a dining room and the living room continues to impress measuring just shy of 18ft with wonderful large windows allowing plenty of light to come flooding in.

In addition, there is fantastic parquet flooring throughout, large windows and plenty of storage which include a storage cupboard in the communal hallway and fitted wardrobes.

Poplar Court is a centrally located, providing easy access to both Richmond and St Margarets train stations and bus routes. Shops, cafés and restaurants are on your doorstep. The picturesque Marble Hill Park is around the corner as well as the River Thames.

### Features

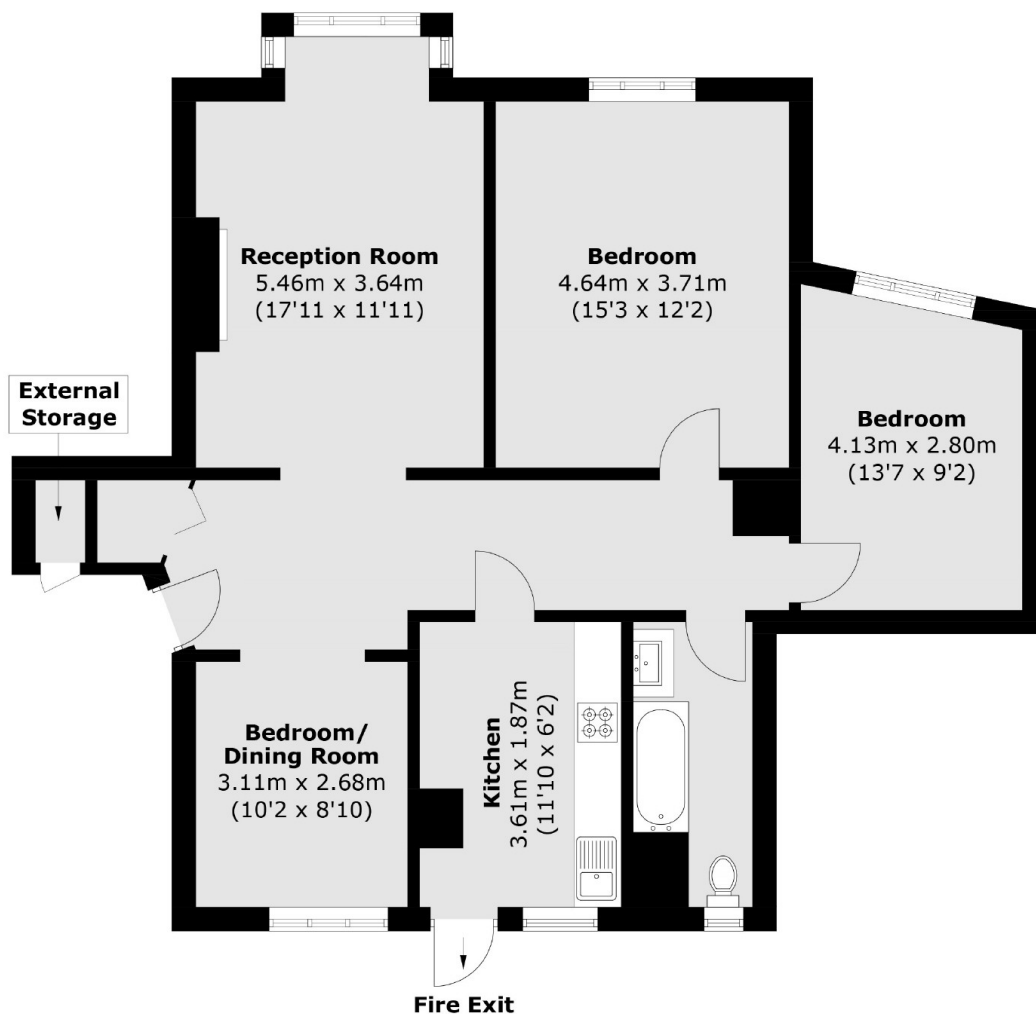
- Top Floor Apartment
- Two/Three Bedrooms
- Pretty Views
- Central Location
- Long Lease
- Parking







# Richmond Road, Twickenham, TW1



Total area (approx.): 89.4 sq. m (962.3 sq. ft)  
External Storage (approx.): 0.7 sq. m (7.5 sq. ft)