



## Richmond Road, TW1

### £485,000

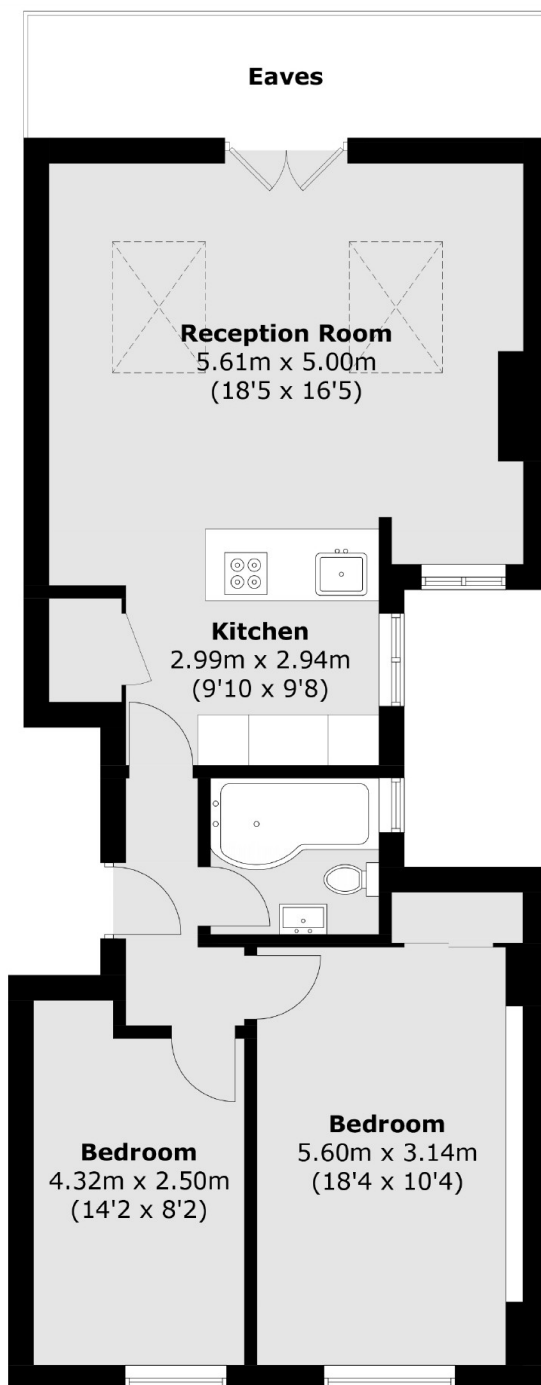
This stylish top floor conversion apartment comes with two double bedrooms and enjoys beautiful views over Richmond. The large open-plan kitchen/living/dining room is impressive with the added bonus of a secluded study area too. The property is offered with a newly extended lease upon completion and is not to be missed.

Located in the heart of East Twickenhams bustling high street, the property is close to cafés, shops, the River Thames and Marble Hill Park. Richmond town centre is also close by with its tube and train station, ideal for the busy commuter.

### Features

- Victorian Conversion
- Two Double Bedrooms
- Modern Interior
- Open-Plan Kitchen/Living Room
- Extended Lease
- Central Location

# Richmond Road, East Twickenham, TW1



Total area (approx.): 71.0 sq. m (764.2 sq. ft)  
(Excluding Eaves)