



Park House Gardens, TW1

£599,950

An impressive and exceptionally spacious first floor split-level two double bedroom apartment complete with no onward chain, a private garden and off-street parking.

Situated in this quiet cul-de-sac a short stroll from the banks of The River Thames in East Twickenham and within close proximity to Richmond town centre, train/tube station and local shops.

Features

Split-Level First Floor Flat
Share Of Freehold
Two Double Bedrooms
Off-Street Parking
Private Garden/Terrace
No Chain

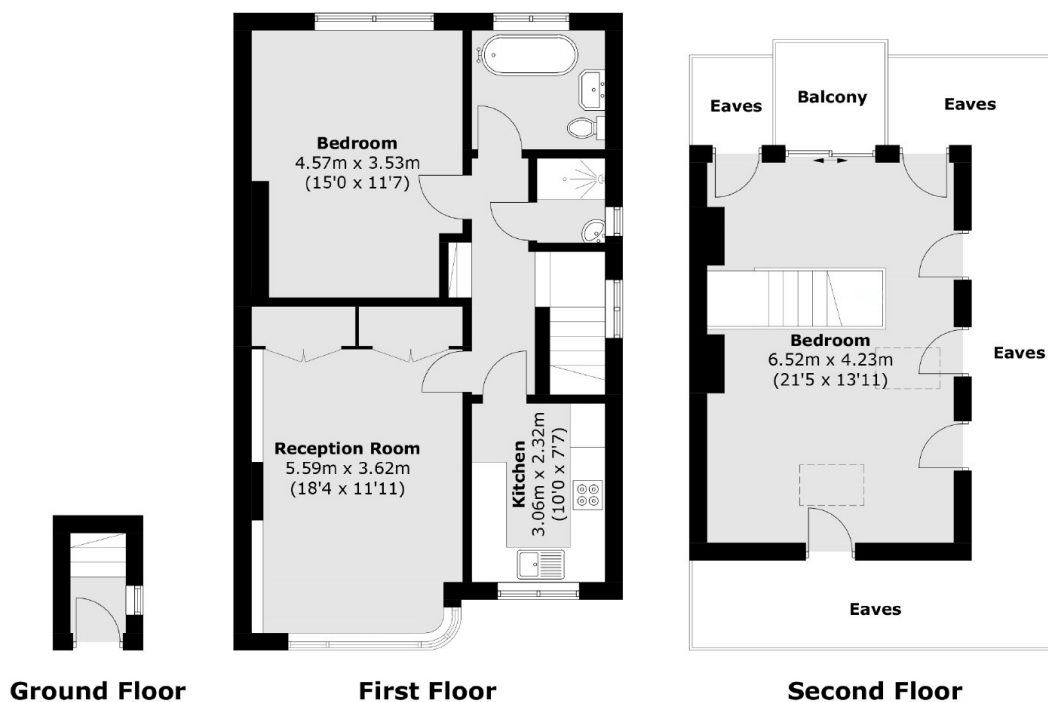


Park House Gardens, TW1

This is a great property to put your own stamp on, a blank canvas. Accommodation is arranged over two floors and the rooms could be used in a variety of ways to suit your needs. We love the views from the roof terrace.



Park House Gardens, East Twickenham, TW1



Total area (approx.): 90.3 sq. m (972.0 sq. ft)
Balcony: 3.3 sq. m (35.5 sq. ft)
(Excluding Eaves)