



Northcote Road, TW1

£465,000

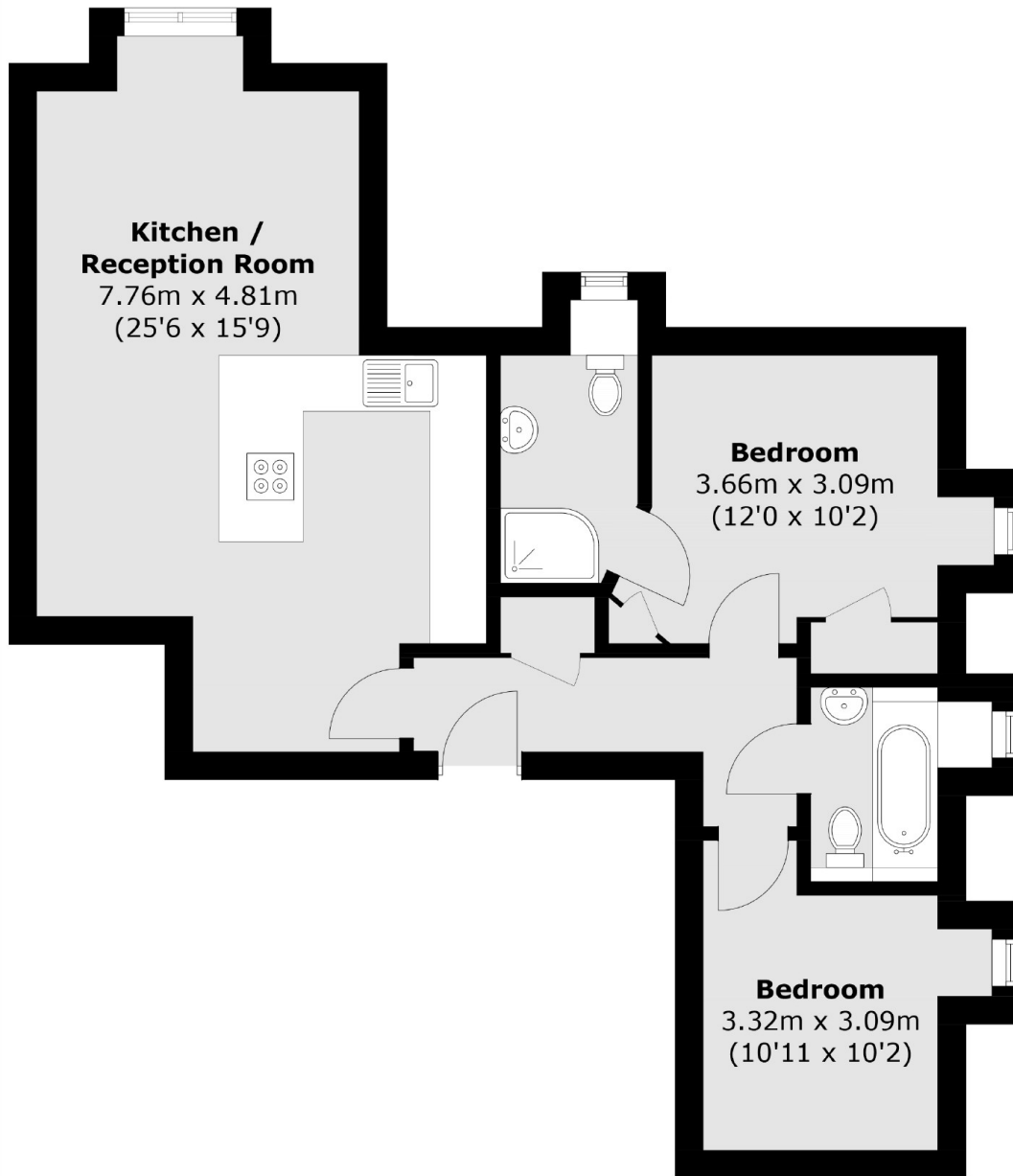
A fantastic and modern top floor two bedroom purpose-built apartment with off-street parking. With two bathrooms and centrally located within St Margarets, this property is not to be missed.

Located on Northcote Road within 0.3 miles of the River Thames and its tow path walks into Richmond. Close to St Margarets village and mainline train station only 0.5 miles away.

Features

- No Onward Chain
- Two Double Bedrooms
- Two Bathrooms
- Top Floor
- Unallocated Off-Street Parking
- Purpose-Built

Northcote Road, St Margarets, TW1



Total area (approx.): 61.6 sq. m (663.0 sq. ft)