



White Lodge Close, TW7

£375,000

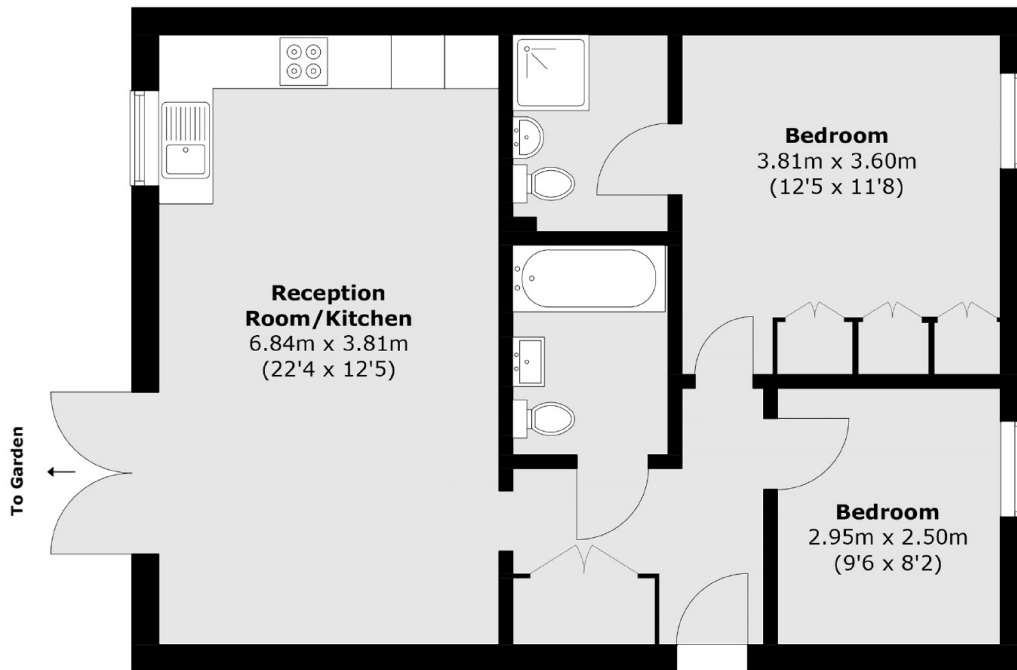
A spacious two double bedroom ground floor apartment situated in a modern and popular development. With an open-plan reception/kitchen, a family bathroom and French doors leading onto a private patio. This chain-free property also features an en suite shower room and added benefit of having allocated parking, a secure video entry system and communal gardens.

White Lodge Close a residential development, which overlooks Silverhall Park, is ideally located within easy reach of Old Isleworths riverside with its bars, restaurants and tow path walks along the River Thames into Richmond town centre. Syon Park is also close by.

Features

- Two Double Bedrooms
- Ground Floor
- Private Patio
- Two Bathrooms
- Quiet Location
- Off-Street Parking

White Lodge Close, Isleworth, TW7



Total area (approx.): 64.4 sq. m (693.1 sq. ft)