



Newry Road, TW1

£835,000

A lovely halls adjoining end of terrace three double bedroom Victorian house situated on this quiet residential road in St. Margarets. With scope to modernise and extend this is a house that can grow with your family.

Newry Road is a quiet residential road in St. Margarets which is within 0.5 miles of the River Thames and the tow path walks into Richmond. St Margarets village high street is 0.6 miles away with its boutique shops, cafés and mainline train station which has a direct service into London Waterloo.

Features

- Victorian Family Home
- Fantastic Location
- Large Rear Garden
- Scope To Extend (STPP)
- Three Double Bedrooms
- End Of Terrace

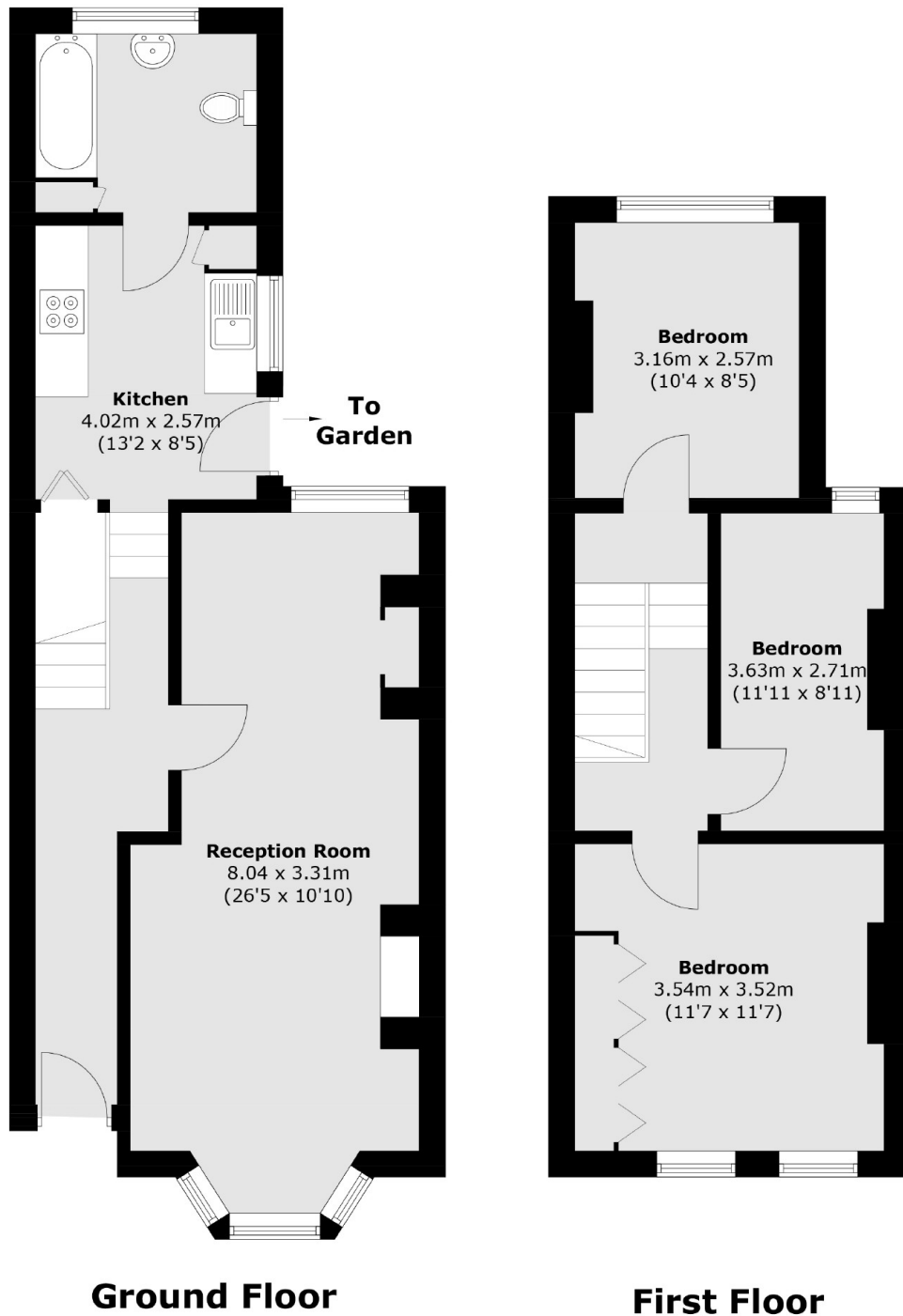


Newry Road, TW1

The accommodation is arranged over two floors and very much the original footprint. The double reception room is bright and spacious with high ceilings and bay window. The galley kitchen leads onto the family bathroom and a separate door to the rear garden. Upstairs has three double bedrooms and plenty of potential to put your stamp on.



Newry Road, St Margarets, TW1



Total area (approx.): 81.2 sq. m (874.0 sq. ft)