



Northcote Road, TW1

£1,300,000

Dexters



Northcote Road, TW1

A beautiful five bedroom Victorian end-of-terrace house situated in a quiet cul-de-sac in St Margarets. This property would make an ideal family home offering plenty of space throughout and a large south-facing garden. This property is not to be missed.

The ground floor is a great size with a double reception room, a feature fireplace, a bay window and popular plantation shutters. The extended kitchen/dining/family room has recently been refurbished and provides a wonderful entertaining space with bi-folding doors leading onto the garden. A lovely home office is situated at the end of the garden and is fully fitted with electricity and phone sockets.

The bedrooms are arranged over two floors. The first floor has three double bedrooms and a generous family bathroom with bespoke storage. The second floor has two further bedrooms the larger of the two has the added bonus of an en suite bathroom and eaves storage.

Northcote Road is a popular residential road in St. Margarets with a wide choice of schools, 10 minutes walk from St. Margarets Station, and within 0.3 miles of the River Thames and its pretty tow path walks into Richmond town centre.

Features

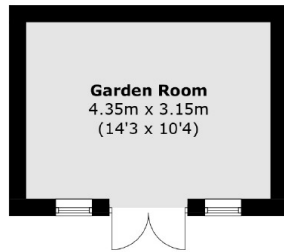
- Victorian House
- Five Bedrooms
- Fantastic Location
- Beautifully Presented
- Period Features
- South-Facing Garden



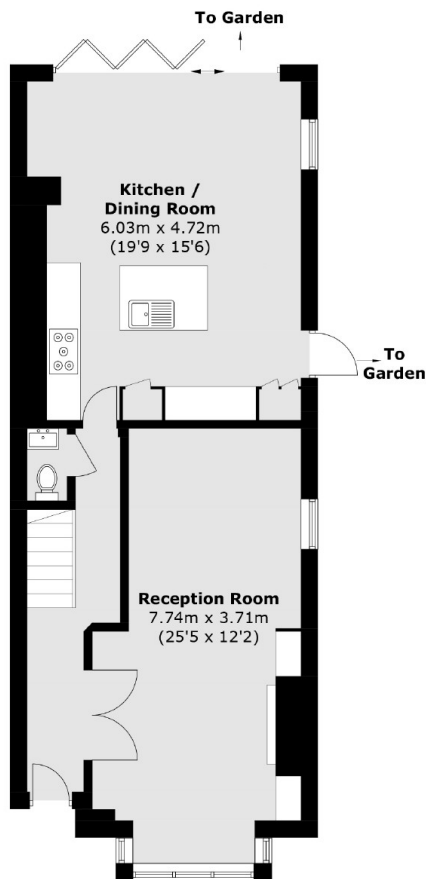




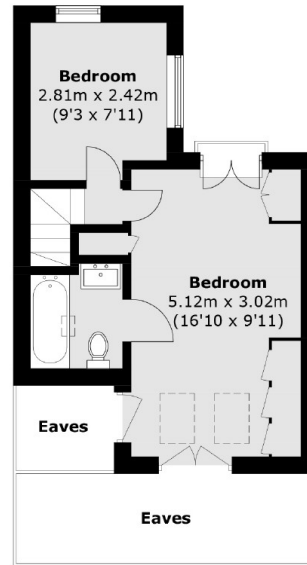
Northcote Road, St Margarets, TW1



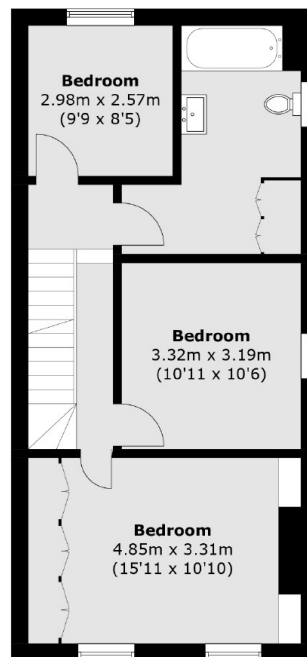
(Not Shown In Actual
Location / Orientation)
Outbuilding



Ground Floor



Second Floor



First Floor

Total area (approx.): 147.9 sq. m (1,591.9 sq. ft)
(Excluding Eaves)

Garden Room: 13.9 sq. m (149.6 sq. ft)