

## Apple Grove, TW1

£699,999

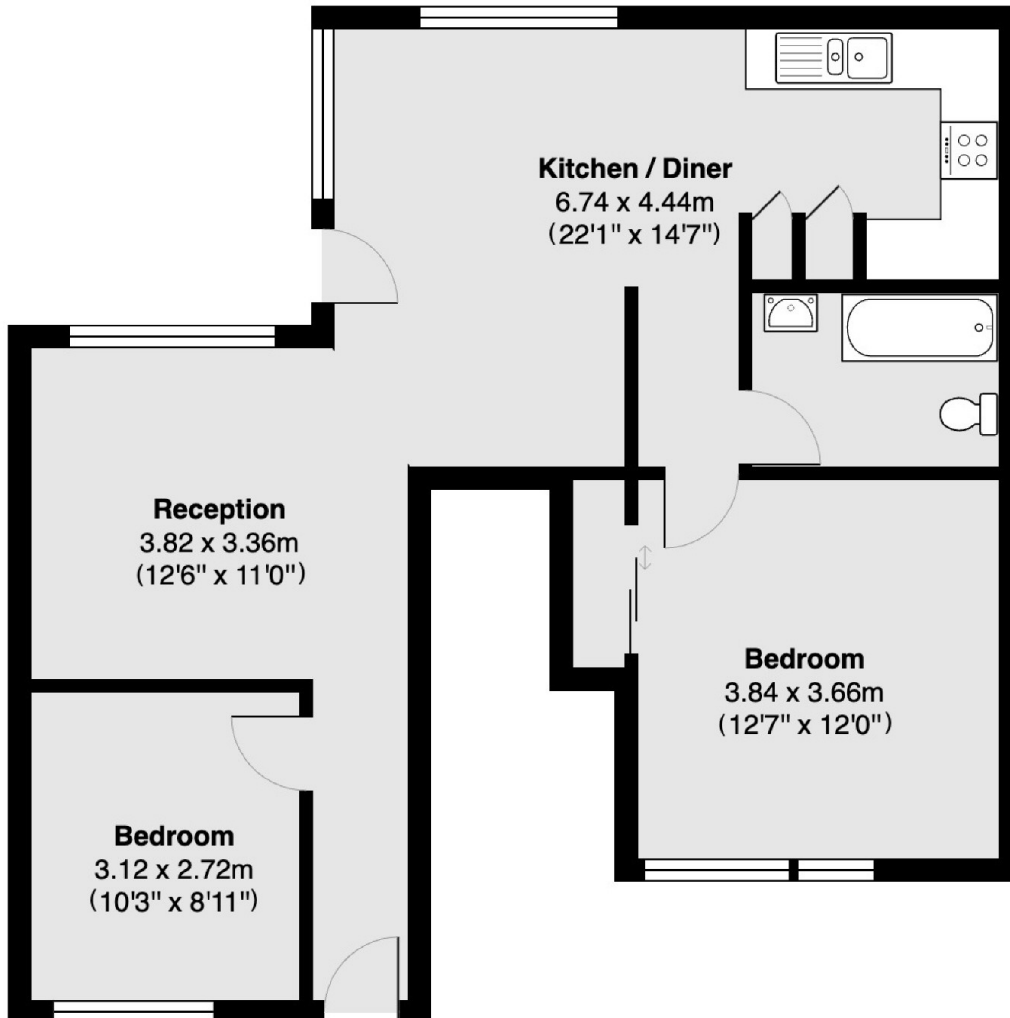
Set in a quiet cul-de-sac, is a well-presented two bedroom modern maisonette situated on the ground floor of a private gated development. With an open-plan reception room, kitchen/diner leading into a large L-shaped garden. There is allocated off-street parking and the property is presented beautifully. This maisonette is not to be missed.

### Features

- Ground Floor
- Two Bedrooms
- Share Of Freehold
- Large Private Garden
- Gated Development
- Private Allocated Parking

Apple Grove is located in a quiet residential cul-de sac 0.4 miles from St Margarets Village and mainline train station. The property is also 0.5 miles from Moor Mead Park.

# Apple Grove, Twickenham, TW1



**Total area 70.2 sq m ( approx ) ( 756 sq ft approx )**