



**St. Margarets Road, TW1**

**£449,950**

**Dexters**





## St. Margarets Road, TW1

This bright and spacious one double bedroom conversion apartment is situated on the first floor of this handsome Edwardian house on the borders of St. Margarets village and East Twickenham.

The property comes with many benefits not just the location; well proportioned rooms, plenty of storage, pretty original features and a share of the freehold.

St. Margarets Road is a popular residential road in a central location. Cafés, shops and the train station's links to London Waterloo are 0.3 miles away. Richmond town centre's shops, restaurants and District Line underground service are 0.9 miles away.

### Features

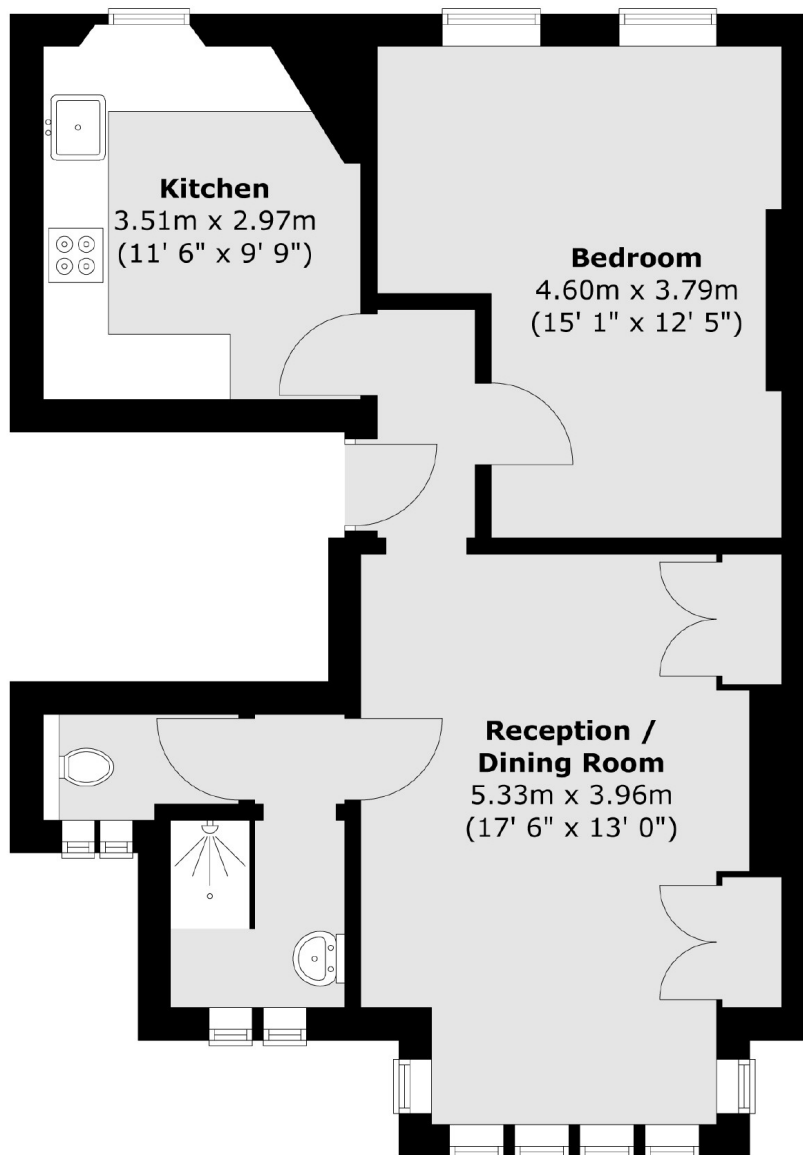
- Edwardian Conversion
- Share Of Freehold
- Large Rooms
- One Double Bedroom
- High Ceilings
- Central Location





# St. Margarets Road, St Margarets, TW1

## First Floor



Total area (approx.) : 54.4 sq. m (585 sq. ft)