



Clevedon Road, TW1

£1,590,000

Dexters



Clevedon Road, TW1

A beautiful three bedroom apartment situated within the prestigious Richmond Bridge Estate and near Richmond riverside. Immaculately presented throughout and offered to the market with no onward chain, this property is not to be missed.

As you enter this newly renovated apartment, you are greeted by a bright and airy hallway which leads onto a large master bedroom with fitted wardrobes and a spacious en suite bathroom finished to a high standard. There are also two further double bedrooms, one of which comes with a lovely Juliet balcony, a family bathroom and a separate WC.

The well-proportioned kitchen has been recently refurbished, featuring modern high-end appliances and ample storage. The reception room is most impressive with abundance of space to entertain and leading onto a generous private balcony with views of the River Thames.

This property is located on the second floor of a lift service building and benefits from an allocated parking space, access to secure bike storage and beautiful communal gardens.

Features

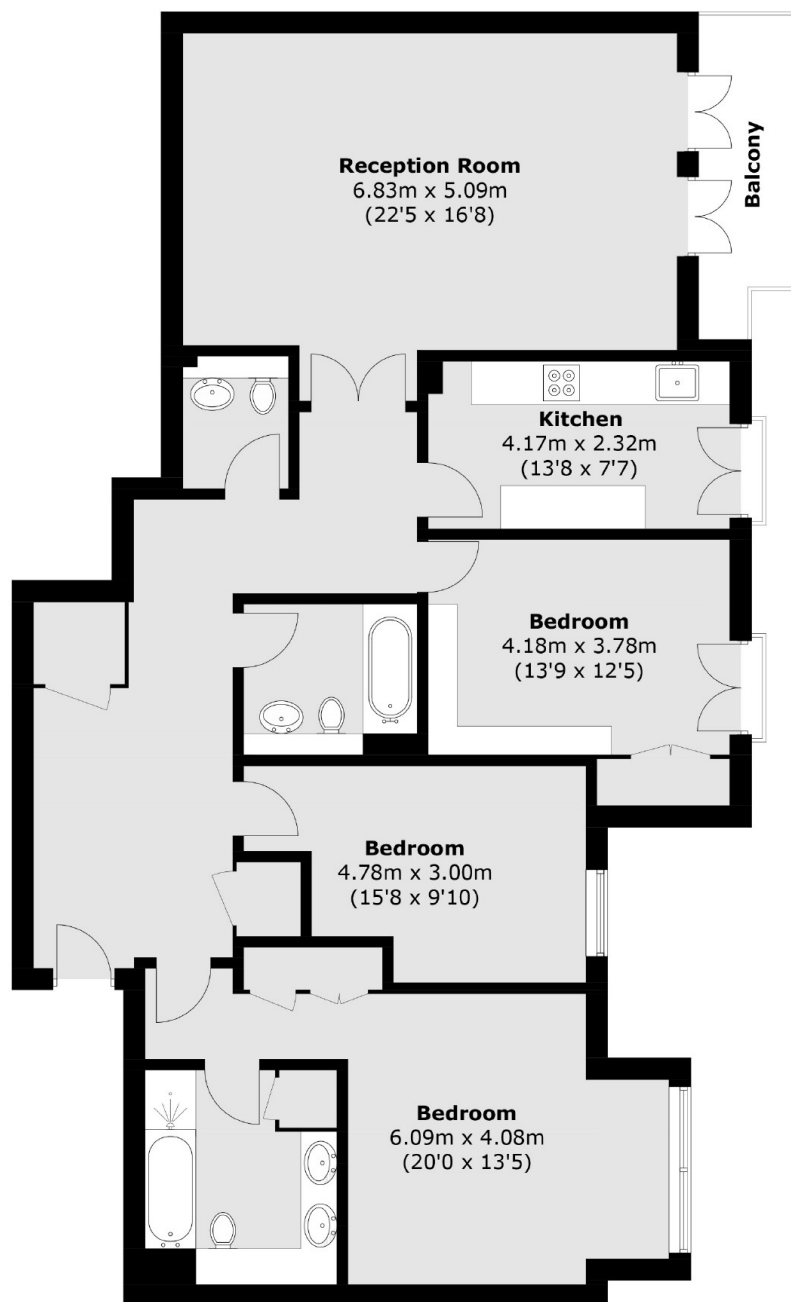
- Newly Renovated Apartment
- Three Double Bedrooms
- Large Balcony
- Secure Underground Parking
- Gym And Concierge Service
- Communal Gardens







Clevedon Road, Twickenham, TW1



Total area (approx.): 131.8 sq. m (1,418.7 sq. ft)
Balcony: 5.8 sq. m (62.4 sq. ft)