



The Barons, TW1

£499,950

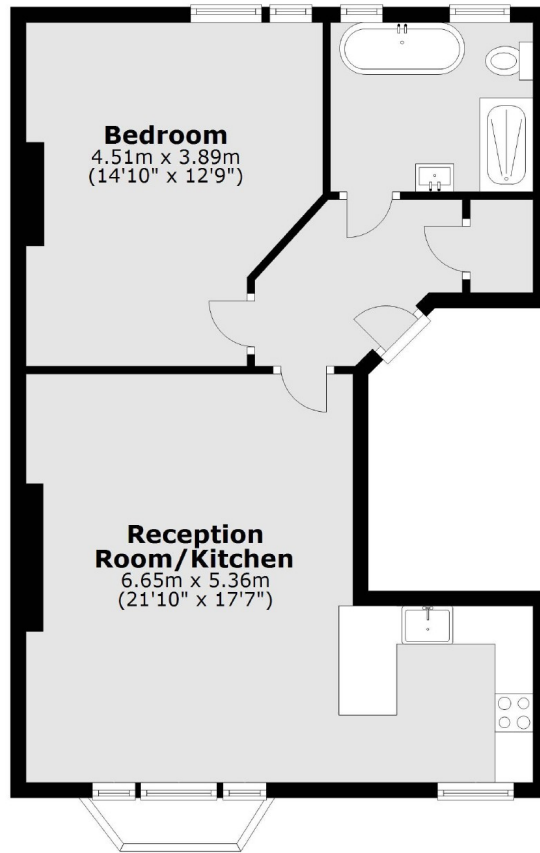
A rare opportunity to purchase this beautifully presented first floor one bedroom conversion apartment, situated in a sought after location in St Margarets village. In fantastic condition, this property is being offered to the market with no onward chain.

The Barons is a quiet road and less than a minute's walk to St Margarets rail station (with trains to Waterloo every 15 minutes) and access to all the village amenities. The Thames riverside and picturesque Richmond is less than 10 minutes away. With easy access to the A316 leading to the city or M3/M25.

Features

- First Floor
- Period Conversion
- Communal Garden
- Central Location
- Beautifully Presented
- No Onward Chain

The Barons, St Margarets, TW1



Total area: approx. 57.1 sq. metres (614.5 sq. feet)