



## Arlington Road, TW1

### £450,000

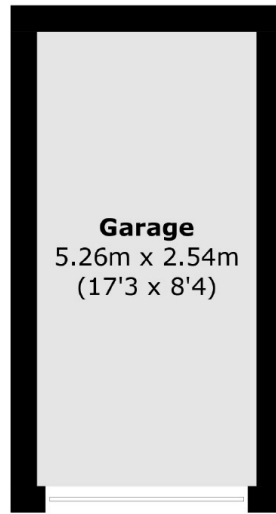
A beautifully presented two double bedroom apartment situated in the heart of East Twickenham. This well proportioned property comes with a long lease, a garage and a private balcony overlooking the communal gardens.

Howmic Court is located 0.3 miles of the banks of the River Thames with its tow paths to Richmond and St. Margarets village and its train station with links into London Waterloo.

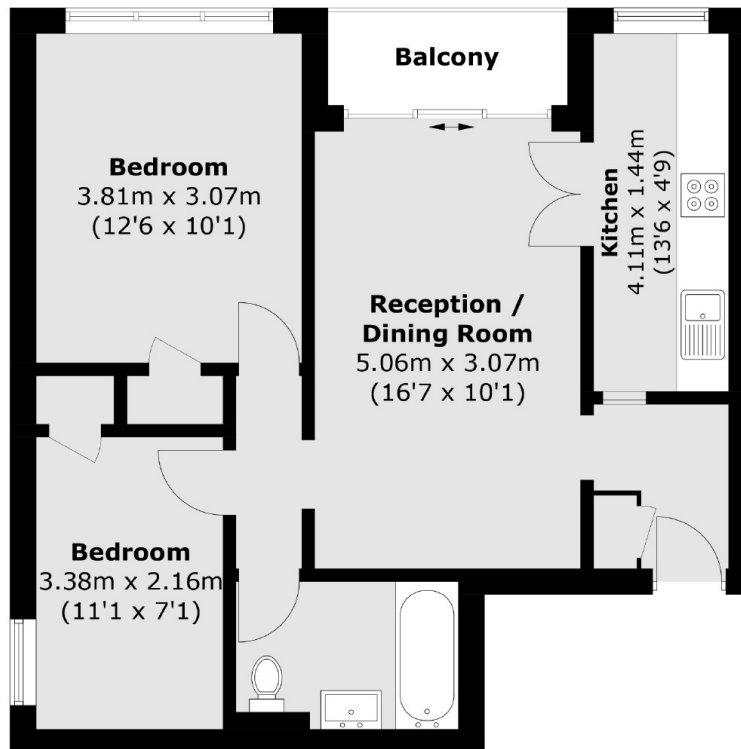
### Features

- Two Double Bedrooms
- Beautifully Presented
- Private Balcony
- Long Lease
- Communal Garden
- Garage

# Arlington Road, East Twickenham, TW1



(Not Shown In Actual  
Location / Orientation)



Total area (approx.): 55.3 sq. m (595.2 sq. ft)  
Garage area (approx.): 13.4 sq. m (144.2 sq. ft)  
Balcony area (approx.): 3.0 sq. m (32.3 sq. ft)