



White Lodge Close, TW7

£699,950

A fantastic four bedroom town house located in a quiet crescent within one of Isleworth's most popular modern developments. Located within walking distance to the River Thames and Old Isleworth with its pubs, shops & cafes, this property is not to be missed.

White Lodge Close is a popular development within 0.8 miles of Syon Lane Train Station and located within easy reach of Isleworth Station with its regular service into London Waterloo. The River Thames is 0.6 miles away and the lovely green space of Syon Park is only 1.1 miles

Features

- Town House
- Four Bedrooms
- Well Presented Throughout
- Off-Street Parking
- Garage
- Large Garden



White Lodge Close, TW7

This family home offers superb living accommodation split over three floors and has the added benefit of an integral garage and off-street parking for two cars.

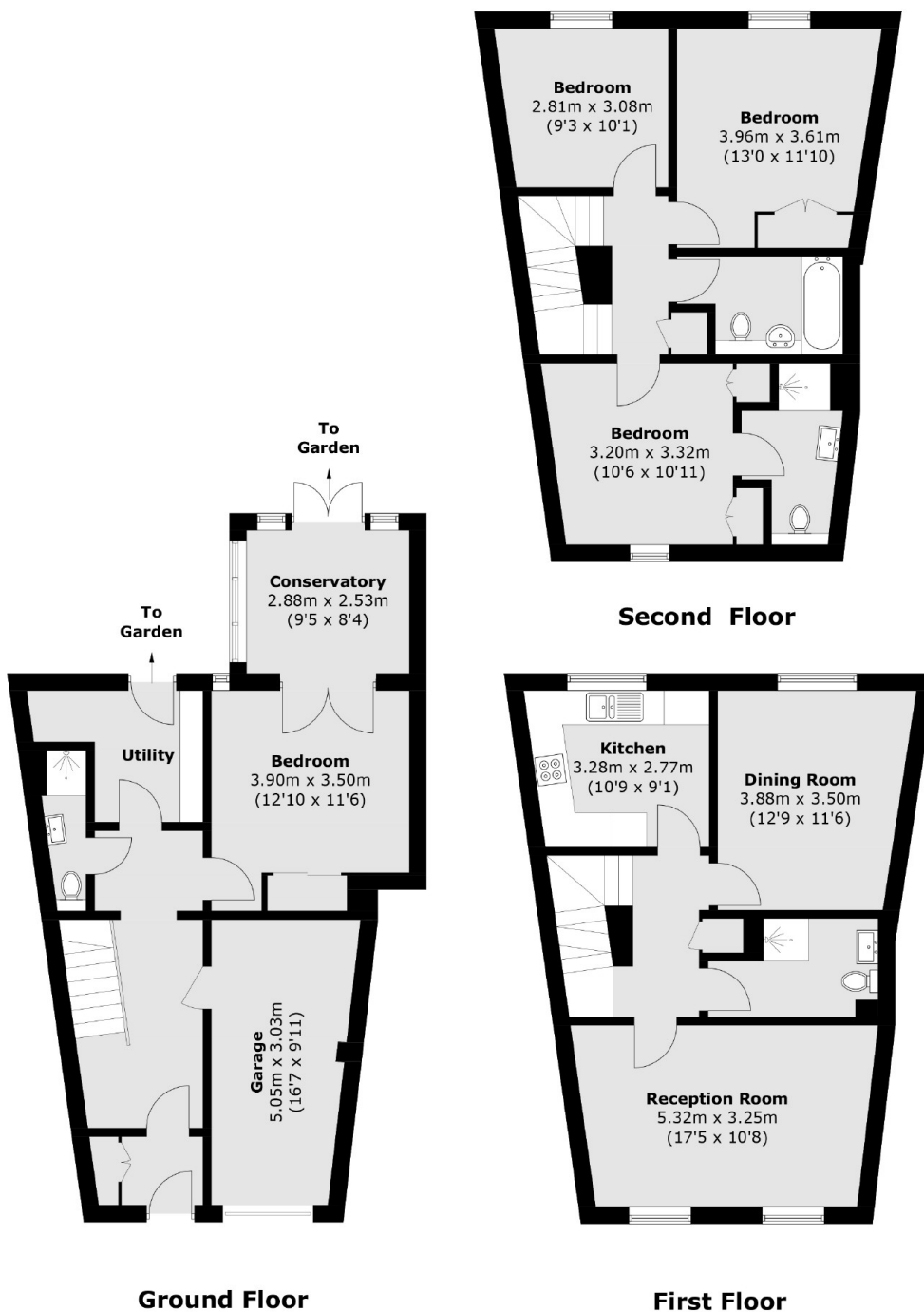
On the ground floor, there is a well proportioned double bedroom which leads onto a conservatory, a separate shower room and a fitted utility room at the rear with doors leading onto an exceptionally large garden.

On the first floor is a bright and spacious lounge, dining room and a fully fitted kitchen. The master bedroom with En suite and fitted wardrobes as well as two further bedrooms and a recently refurbished family bathroom are on the top floor.

This is a fantastic versatile home which is well presented throughout and offers ample storage.



White Lodge Close, Isleworth, TW7



Total area (approx.): 161.6 sq. m (1,739.4 sq. ft)