



Gordon Avenue, TW1

£600,000

Dexters



Gordon Avenue, TW1

Offers In Excess Of £600,000 Situated in a sought after location in St. Margarets, is this Victorian two double bedroom conversion garden flat. The apartment comes with two reception rooms and off-street parking. The sunny private rear garden is a wonderful size and backs onto the River Crane surrounded by mature shrubs and trees. This property is not to be missed.

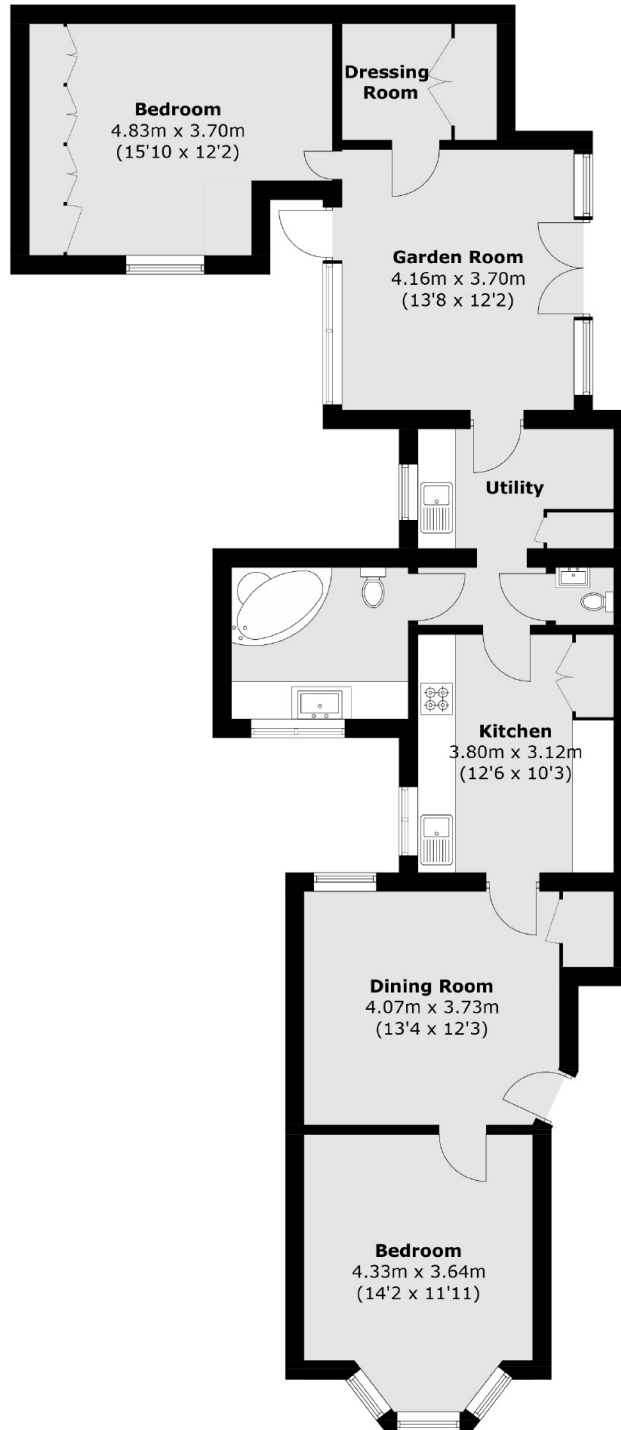
Gordon Avenue is a popular prime residential road with residents permit parking and close to St Margarets village, shops and mainline train station. The River Thames is nearby with it's tow path walks to Richmond as well as Moormead Park.

Features

- Ground Floor
- Two Double Bedrooms
- Two Reception Rooms
- Leasehold
- Private Garden
- Off-Street Parking



Gordon Avenue, , TW1



Total area (approx.): 99.6 sq. m (1,072.1 sq. ft)