



Queens Terrace, TW7

£625,000

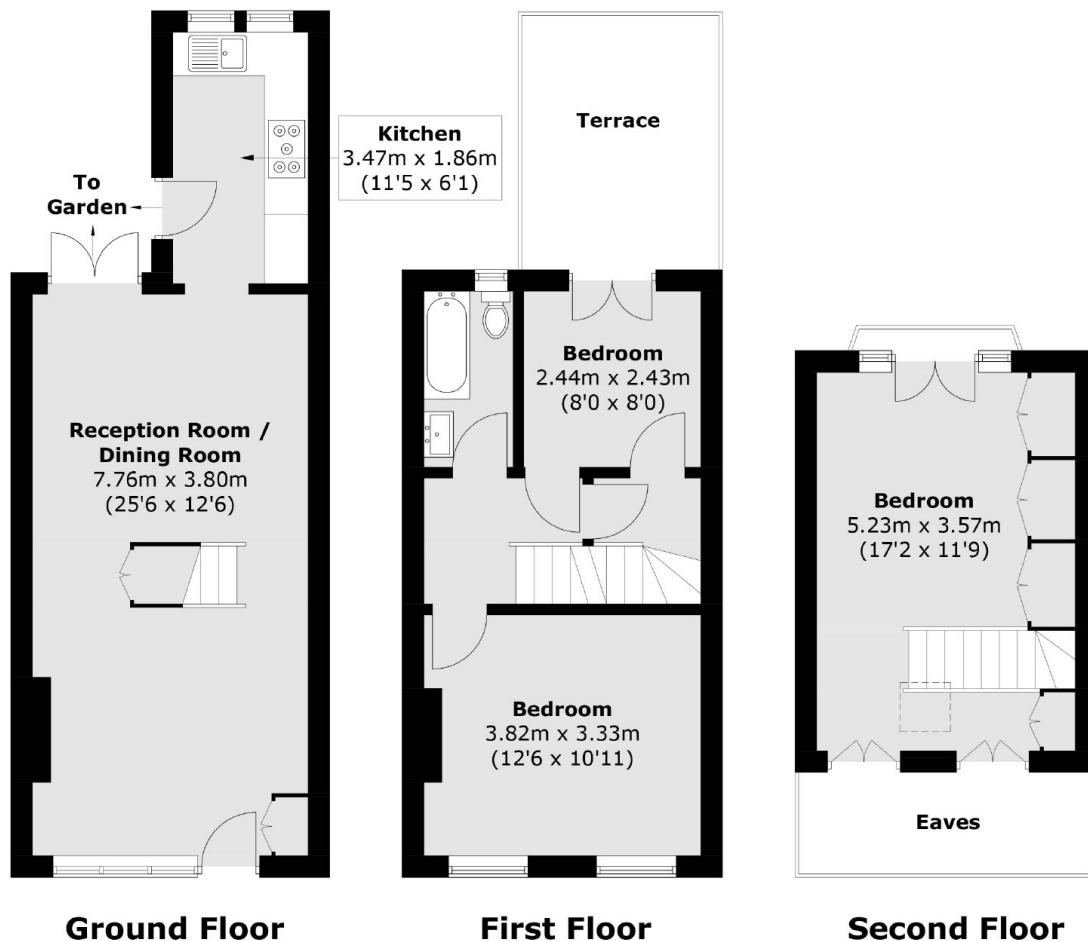
This charming three bedroom Victorian home is a real treat for our buyers. Offered in fantastic condition throughout this property has been expertly loft converted and the first floor roof terrace, which enjoys relaxing views, is a fantastic bonus.

Queens Terrace is located within a lovely cul-de-sac in Old Isleworth within half a mile of the River Thames and its tow path walks to Richmond and St Margarets village with its train station, cafés, bars and restaurants.

Features

- Victorian
- Three Bedrooms
- First Floor Bathroom
- Roof Terrace
- Private Courtyard Garden
- Excellent Condition

Queens Terrace, Isleworth, TW7



Total area (approx.): 85.8 sq. m (923.5 sq. ft)
(Excluding Eaves)

Balcony (approx.): 9.5 sq. m (102.2 sq. ft)