



Elizabeth Gardens, TW7

£799,950

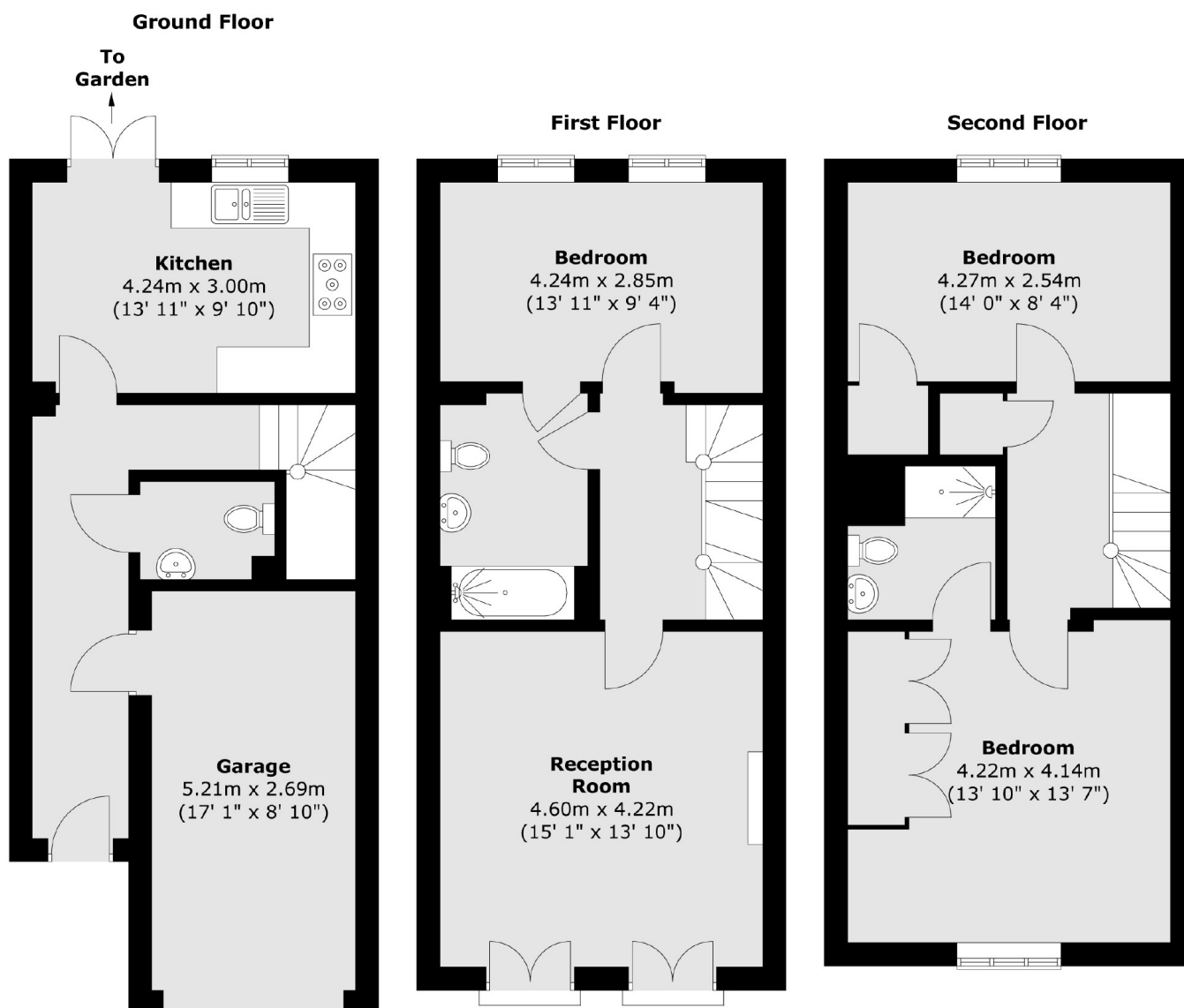
A superb three bedroom townhouse set in a gated development. There is spacious and versatile accommodation throughout, perfect for a growing family. The property has the added benefit of off street parking and no onward chain.

Elizabeth Gardens is a sought after development with access to excellent local schools, Isleworth leisure centre and library, historic Old Isleworth with riverside bars and restaurants.

Features

- Modern Townhouse
- Eat In Kitchen
- Three Double Bedrooms
- Two Bathrooms
- Off Street Parking
- Garage

Elizabeth Gardens, Old Isleworth, TW7



Total area (approx.) : 130.7 sq. m (1407 sq. ft)