



Ellesmere Road, TW1

£1,725,000

Dexters



Ellesmere Road, TW1

This three bedroom detached home offers an exciting opportunity to create and design your perfect family home. Houses like these are rare to the market, so come and take a look before it's too late.

At the front of the house is side access to the garden and potential to create off street parking, with the relevant permissions. The rear garden is a great size and very private and secluded. There is plenty of room to rear extend and still have a large garden for the whole family to enjoy.

The ground floor has a spacious entrance hall, two very large reception rooms, downstairs WC and fitted kitchen with access onto a utility room. Upstairs are three double bedrooms and family bathroom and separate WC. There is a huge loft which could easily be converted, we think this would be a wonderful addition to the property.

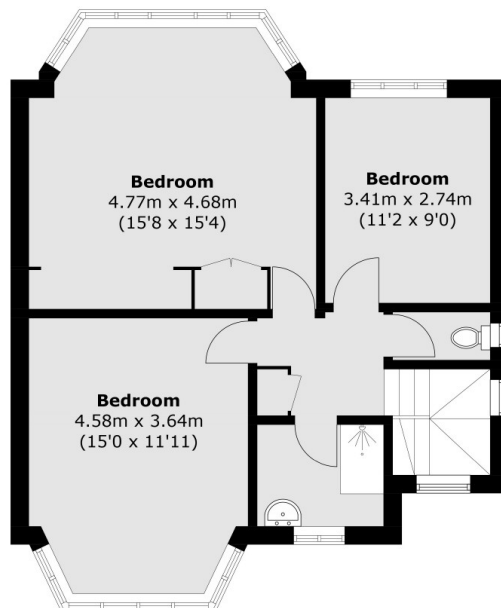
Ellesmere Road is a popular residential road, excellently located for outstanding primary and secondary schools. The River Thames is a short walk away, why not take a stroll over Richmond Bridge for a spot of shopping. A choice of transport links into London.

Features

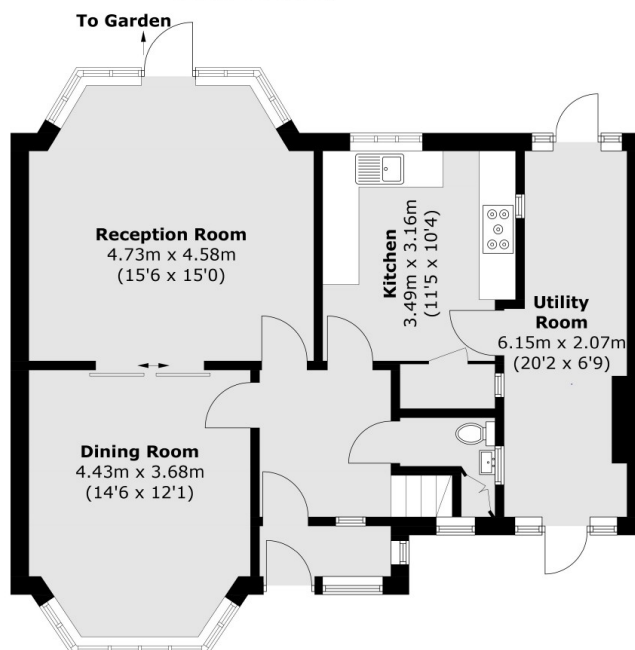
- Detached House
- Three Bedrooms
- Extension Potential STPP
- Large Private Garden
- Good School Catchments
- Desirable Location



Ellesmere Road, Twickenham, TW1



First Floor



Ground Floor