



Egerton Drive, TW7

£6,995 Per calendar month

Dexters



Egerton Drive, TW7

This beautiful five bedroom house is set within an exclusive gated development. The perfect home for a family looking that enjoys stylish living and entertaining, with ample living spaces and two off-street parking spaces.

An impressive five bedroom mid-terrace house arranged over four floors, close to the River Thames. On the ground floor there is a large open plan kitchen/family room with bi-folding doors onto the garden. There is also a separate reception room, a utility room and WC.

On the first floor there is a reception room with doors leading out onto a balcony. There is one bedroom with built-in wardrobes, office/study and a family bathroom. On the second floor the master bedroom has an en suite bathroom and large dressing area with ample storage. There is also another bedroom with an en suite.

The third floor has two double bedrooms and another family bathroom. Both of the bedrooms have built-in storage. There is a car port providing allocated off-street parking for two cars at the rear of the property.

Fitzroy Gate is less than a mile from St Margarets station offering connections to London Waterloo in just 31 minutes, and a riverside stroll from the popular Richmond town centre.

Features

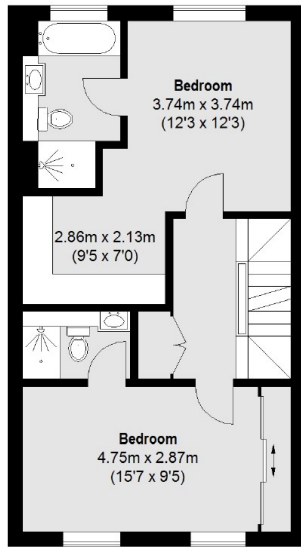
- Gated Development
- Five Bedrooms
- Four Bathrooms
- Two Reception Rooms
- Off-Street Parking
- High Specification



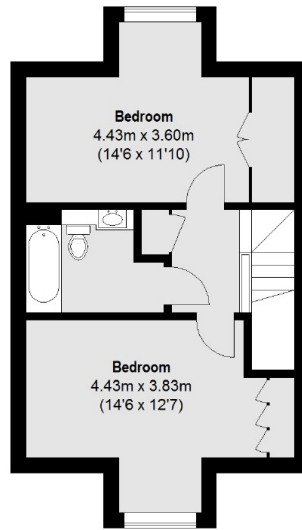




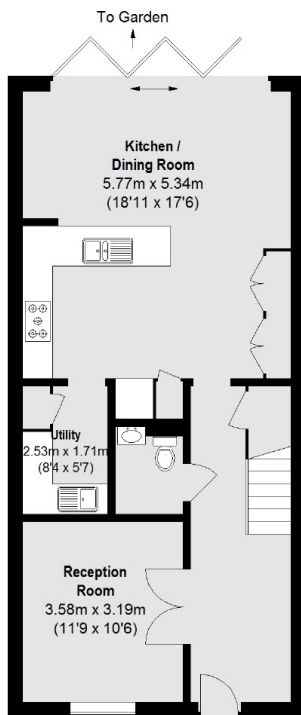
Egerton Drive, Old Isleworth, TW7



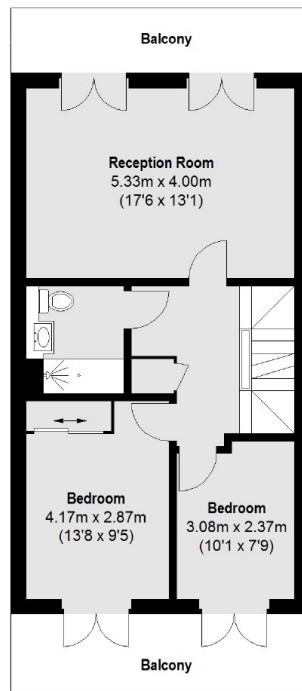
Second Floor



Third Floor



Ground Floor



First Floor



(Not Shown In Actual Location / Orientation)

Total area (approx.): 220.87 sq. m (2377 Sq. ft)
Balconies: 17.25 sq. m (186 Sq. ft)