



## Cambridge Park, TW1

£2,300 Per calendar month

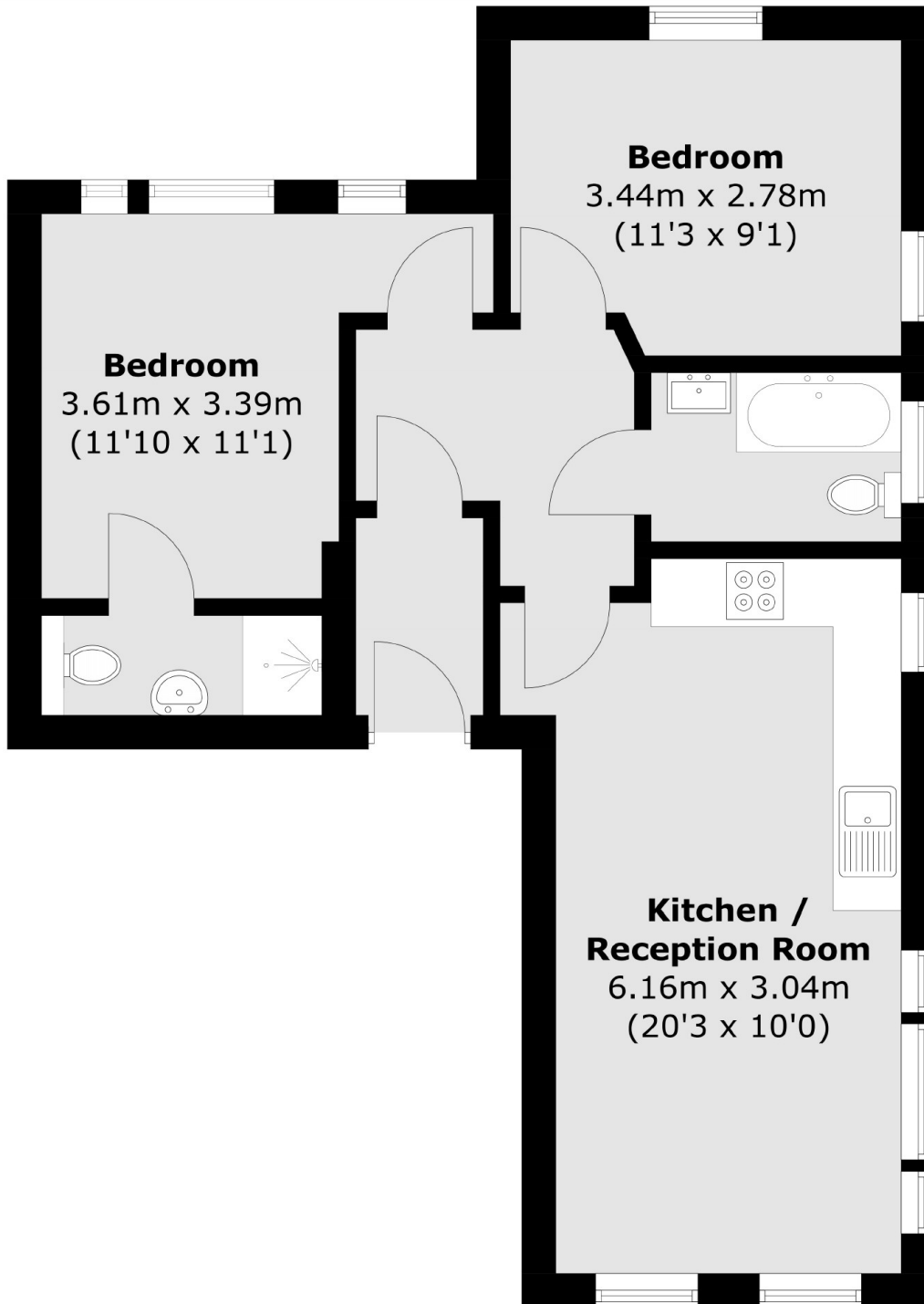
A beautifully presented two bedroom, two bathroom conversion flat in this imposing Victorian building. With heaps of character, this flat is perfect for a professional couple who can enjoy a stroll into Richmond.

Cambridge Park is a leafy residential cul-de-sac situated 0.3 miles from the banks of the River Thames with its short stroll to Richmond. Richmond boasts popular shops and restaurants and has a main line train station with fast links to Waterloo.

### Features

- Ground Floor
- Pretty Building
- Two Bedrooms
- Allocated Parking
- Two Bathrooms
- Well Presented

Cambridge Park,  
East Twickenham, TW1



Total area (approx.): 53.8 sq. m (579.1 sq. ft)