



Sidney Road, TW1

£1,295,000

Dexters



Sidney Road, TW1

A rarely available Victorian house in a sought after location in St. Margarets. With period features throughout and potential to extend, this property is not to be missed out on.

On the ground floor there is an entrance hallway and a large through reception room. The kitchen is at the back of the house and leads onto a pretty walled garden with side access. The living room has a beautiful original fireplace and a large bay window. There are high ceilings and original windows throughout.

On the first floor there are three double bedrooms, a family bathroom and a separate WC. There is potential to extend into the loft. With a mature garden which is laid to lawn and has side access there is also scope to extend at the rear of the property.

Sidney Road is a well regarded tree-lined residential street in the heart of St. Margarets village excellently located for outstanding primary and secondary schools. Moor Mead Park is at the end of road and St. Margarets village is only 0.2 miles away

Features

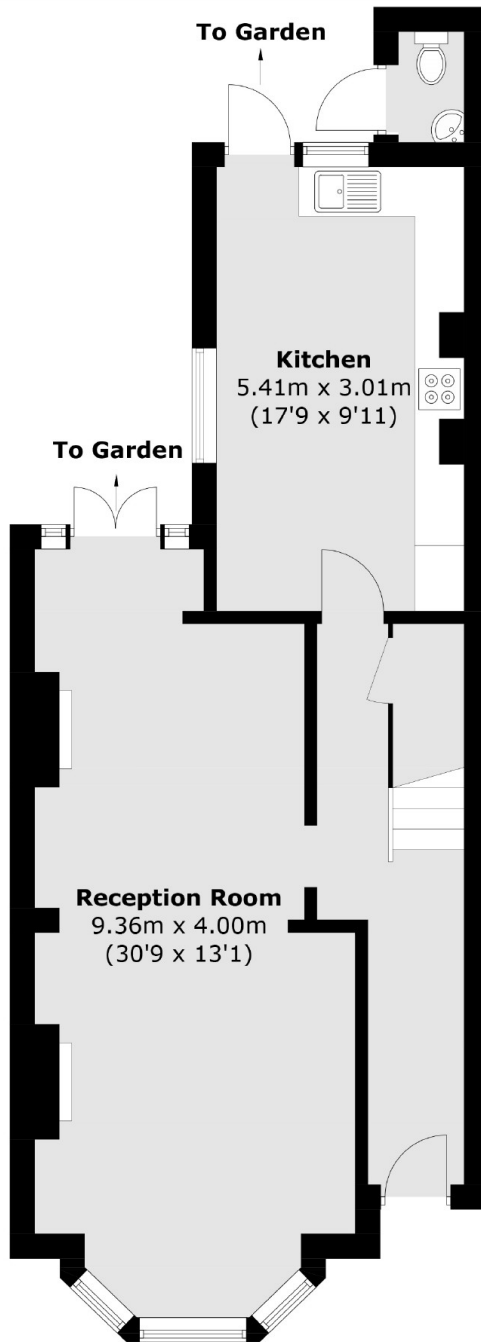
- Central Location
- Three Bedrooms
- Private Garden
- Excellent School Catchments
- Off-Street Parking
- Potential To Extend



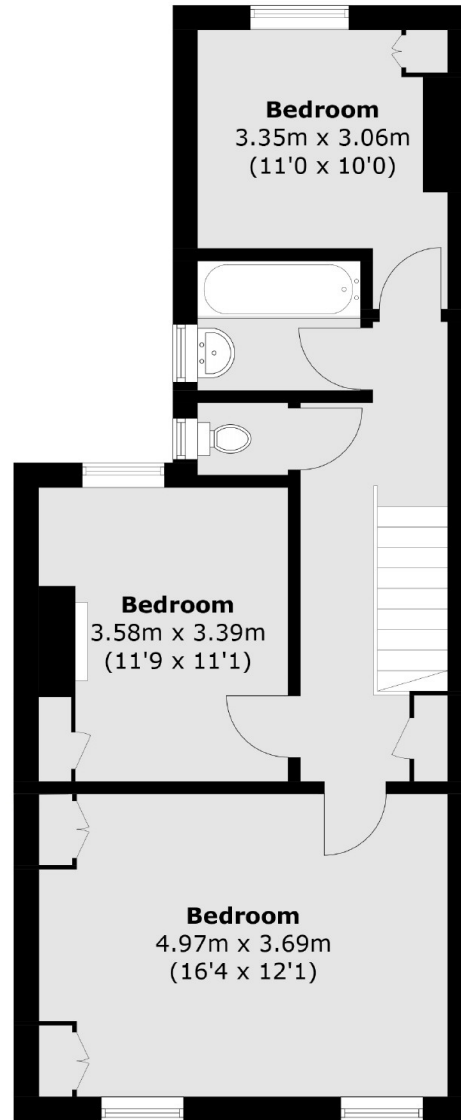




Sidney Road, , TW1



Ground Floor



First Floor

Total area (approx.): 116.0 sq. m (1,248.6 sq. ft)