



Cole Park Road, TW1

£325,000

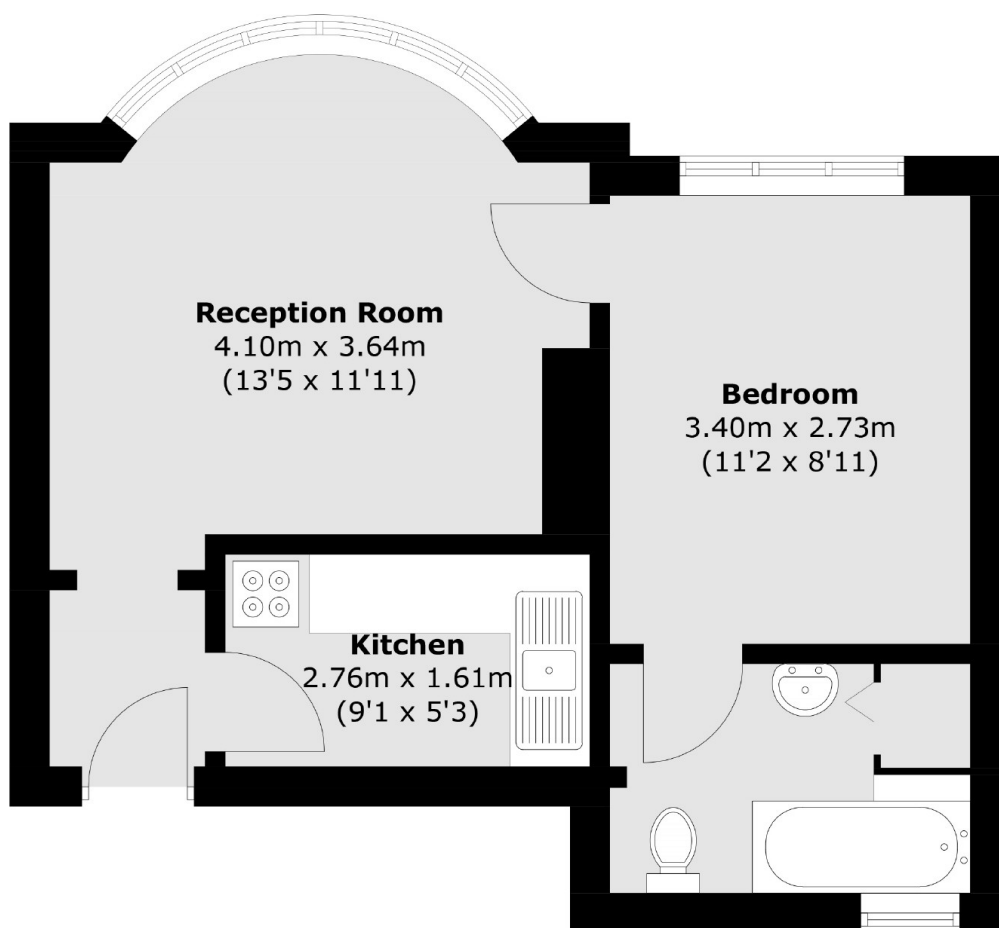
This lovely one double bedroom apartment is one of only four flats and occupies the ground floor of this attractive detached 1930's house. With super low charges, a share of the freehold, allocated off street parking and no onward chain, you can move into your new home as soon as you like.

Cole Park Road is a desirable road in St. Margarets, conveniently located for both St. Margarets and Twickenham mainline stations with fast and frequent trains to London Waterloo. St Margarets village with its shops, cafés and restaurants is only 0.5 miles away.

Features

- One Double Bedroom
- Ground Floor
- Share of Freehold
- Allocated Parking
- Communal Garden
- Excellent Location

Cole Park Road, St Margarets, TW1



Ground Floor

Total area (approx.): 35.7 sq. m (384.3 sq. ft)