



## Chalmers Way, TW1

£8,750 Per calendar month

**Dexters**



## Chalmers Way, TW1

A large and very well presented five bedroom family home, built by renowned luxury house builders Octagon, nestled within the Richmond Lock development. The property provides excellent lateral accommodation extending to over 3,300 sq. Ft.

Arranged over three floors with an integrated garage and off street parking. The ground floor accommodation offers a spacious L shaped kitchen/diner with modern kitchen furnishings and separate utility room that leads into a wide and light dining area looking out onto the garden.

A separate reception room runs from the front to the back of the house and there is also a second reception/media room. The five bedrooms share the use of four beautifully appointed bathrooms, three of which are en-suite.

The Richmond Lock development is ideally located for those requiring easy access in and out of London via the A316/M3. St Margarets village enjoys a wide variety of shops, cafes with both Richmond and Twickenham town centres close by.

### Features

- Detached Family House
- Integral Garage Plus
- Off Street Parking On The Drive
- Five Double Bedrooms
- Four Bathrooms Plus WC
- Well Presented Throughout







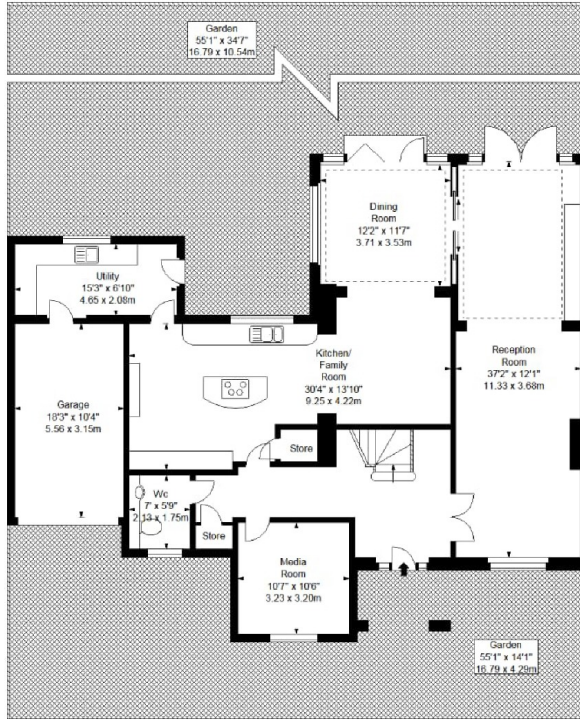




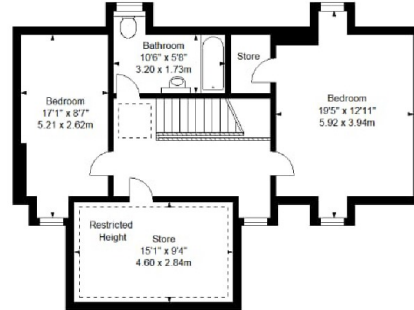


# Chalmers Way, St Margarets, TW1

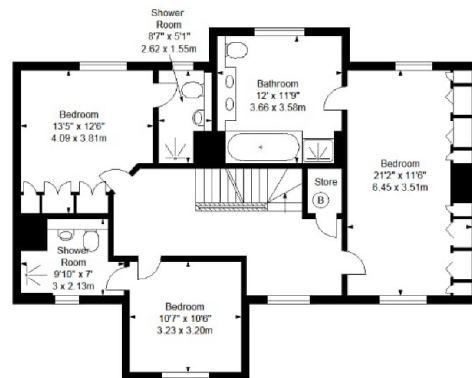
**Chalmers Way, TW1**  
**Approx. Gross Internal Area \***  
**3452 Ft<sup>2</sup> - 320.69 M<sup>2</sup>**  
**(Including Restricted Height & Garage)**  
**Approx. Gross Restricted Height Area \***  
**143 Ft<sup>2</sup> - 13.28 M<sup>2</sup>**



Ground Floor



Second Floor



First Floor

Every attempt has been made to ensure the accuracy of this floor plan however, measurements are approximate and for illustration purposes only.  
 Measured in accordance with the RICS code of measuring practice. Not to scale.  
 © Inside Photography Ltd.  
 Tel 07850 620 122, 0207 263 2188  
 www.ipinteriors.co.uk