



## Queens Terrace, TW7

£535,000

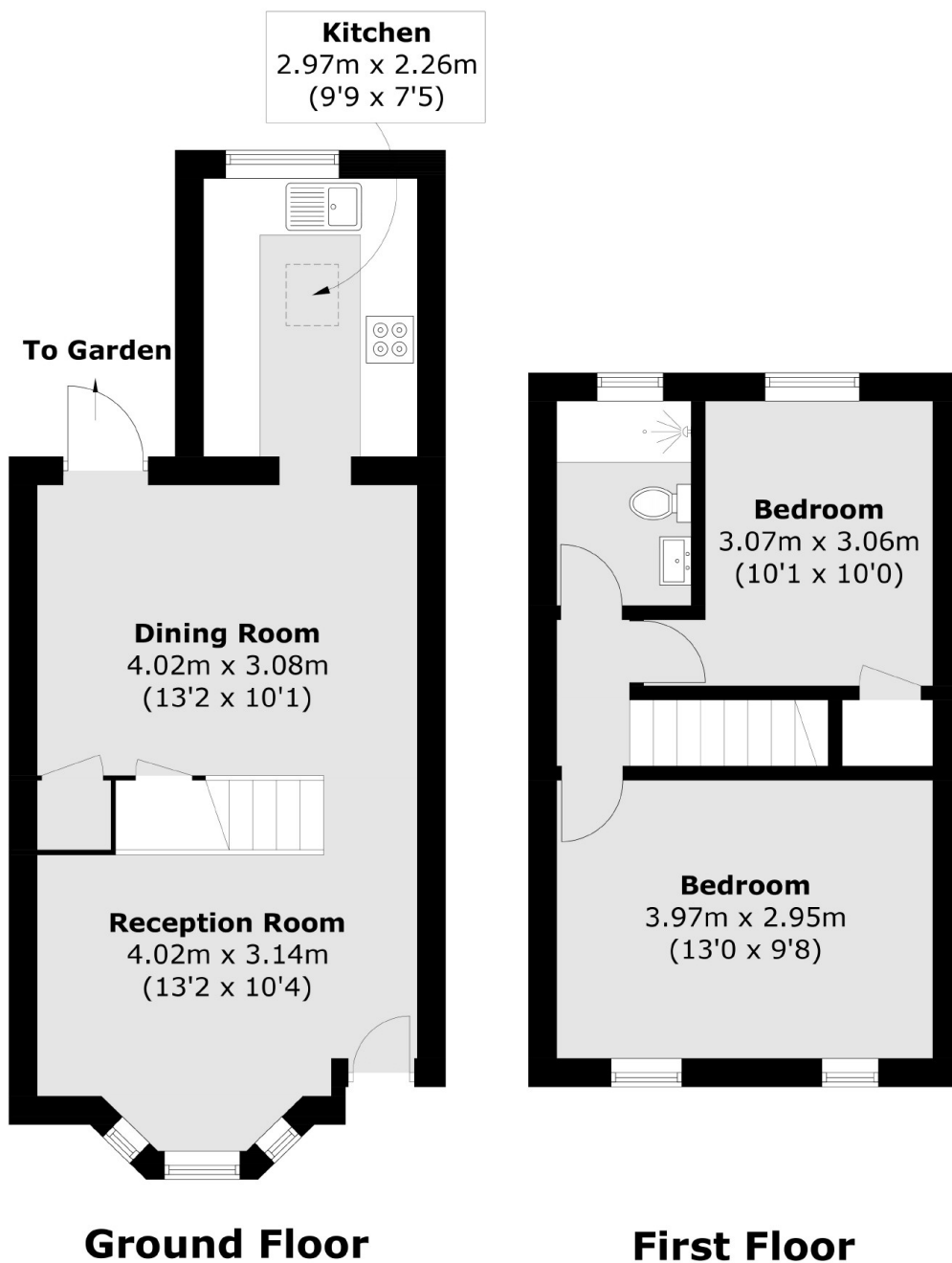
Ideally located in a quiet cul-de-sac is this beautifully renovated two double bedroom Victorian cottage. The property offers excellent room proportions, two reception rooms, a fully fitted kitchen, modern bathroom and a south-facing courtyard garden. We love that there is potential to loft convert STPP, this is a house that can grow with your family.

Queens Terrace is a convenient location in the heart of Old Isleworth close to local schools and shops. The property is also within half a mile of the River Thames with its tow path walks to Richmond and within a mile of St Margarets village and mainline station.

### Features

- Victorian Cottage
- Beautifully Refurbished
- Two Reception Rooms
- Two Double Bedrooms
- South-Facing Garden
- Potential To Extend

# Queens Terrace, Old Isleworth, TW7



Total area (approx.): 61.9 sq. m (666.3 sq. ft)