



White Lodge Close, TW7

£2,300 Per calendar month

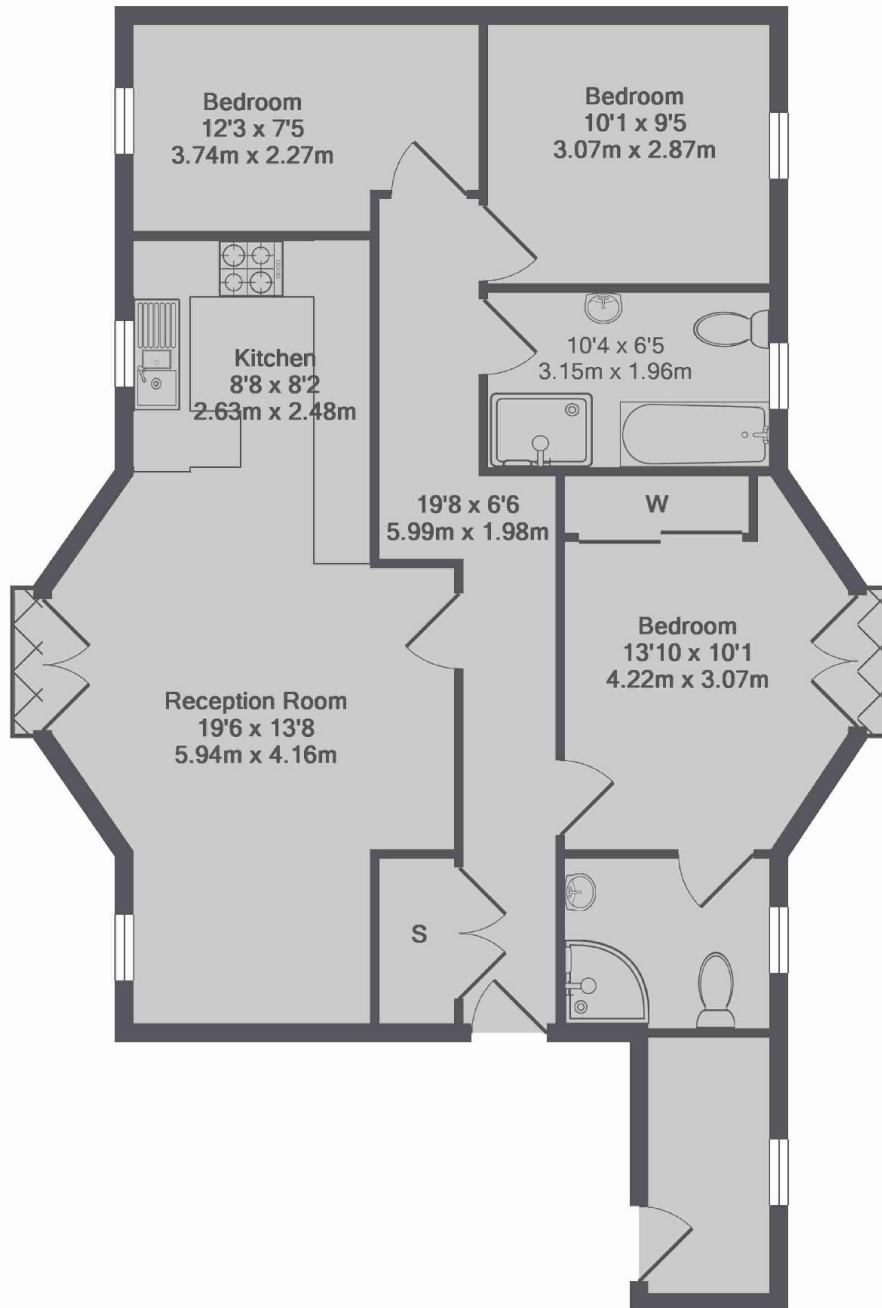
This well kept three bedroom flat in a popular development in Isleworth. Situated on the top floor, spacious, stylish, modern and close to local amenities. The property also has the benefit of an allocated parking space

White Lodge Close is a residential development moments away from the shops and bars of Old Isleworth and is within easy reach of Syon Park and Richmond town centre.

Features

Modern Development
Open-Plan Reception
Three Double Bedrooms
Two Bathrooms
Utility/Storage Room
Allocated Parking

White Lodge Close, Isleworth, TW7



White Lodge Close, TW7
Total Approx. Floor Area 914 Sq.Ft. (84.9 Sq.M.)