



Riverdale Road, TW1

£515,000

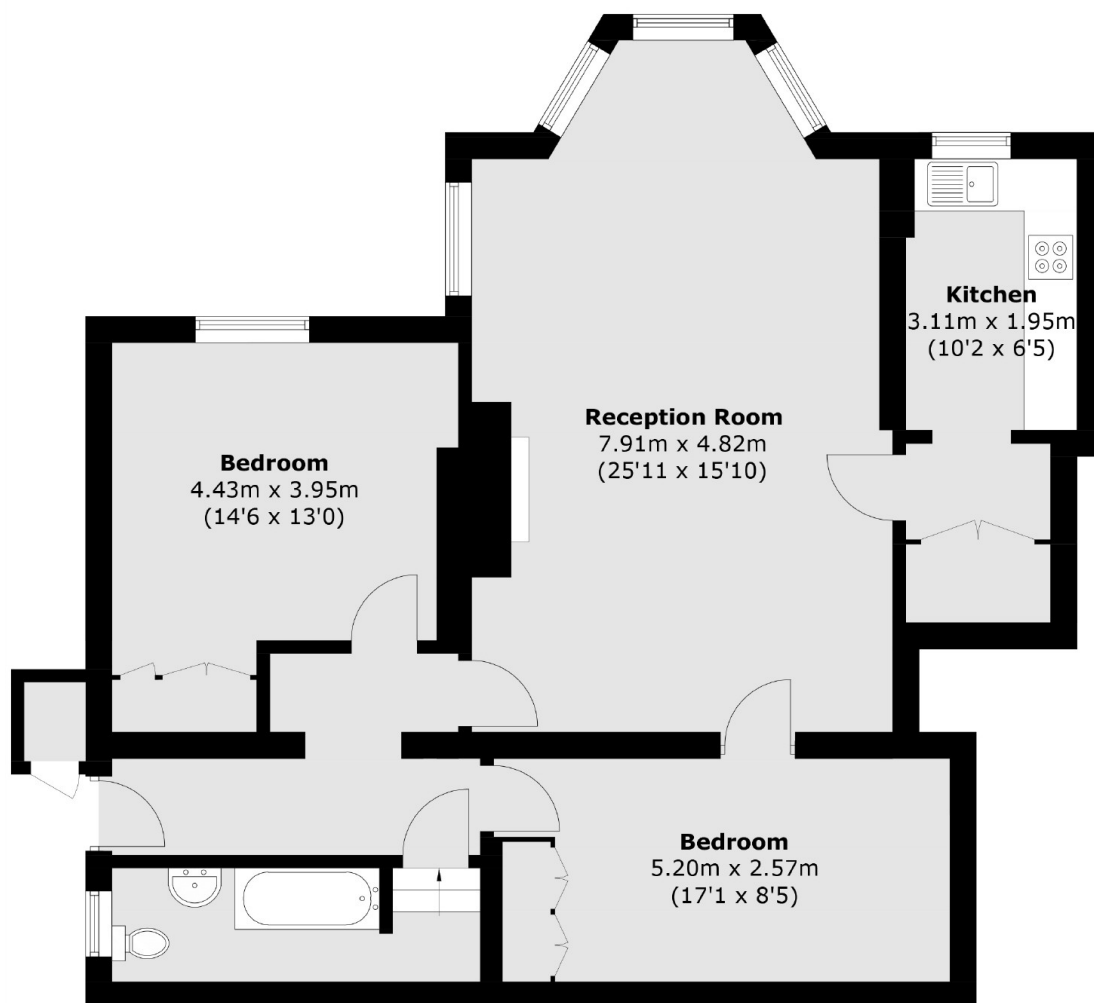
This bright and airy, two bedroom apartment set within a period conversion. The property forms part of a stunning building and offers over 970 sq .ft of accommodation, a large reception room, a private garden and off-street parking.

Riverdale Road is a tree-lined residential road and is superbly-located moments from the River Thames with a short river-walk to Richmond.

Features

- Two Bedrooms
- Off-Street Parking
- Private Garden
- Large Reception Room
- Great Location
- No Onward Chain

Riverdale Road, East Twickenham, TW1



Total area (approx.): 90.3 sq. m (971.9 sq. ft)
External Cupboard area: 0.6 sq. m (6.4 sq. ft)