



Riverdale Road, TW1

£549,950

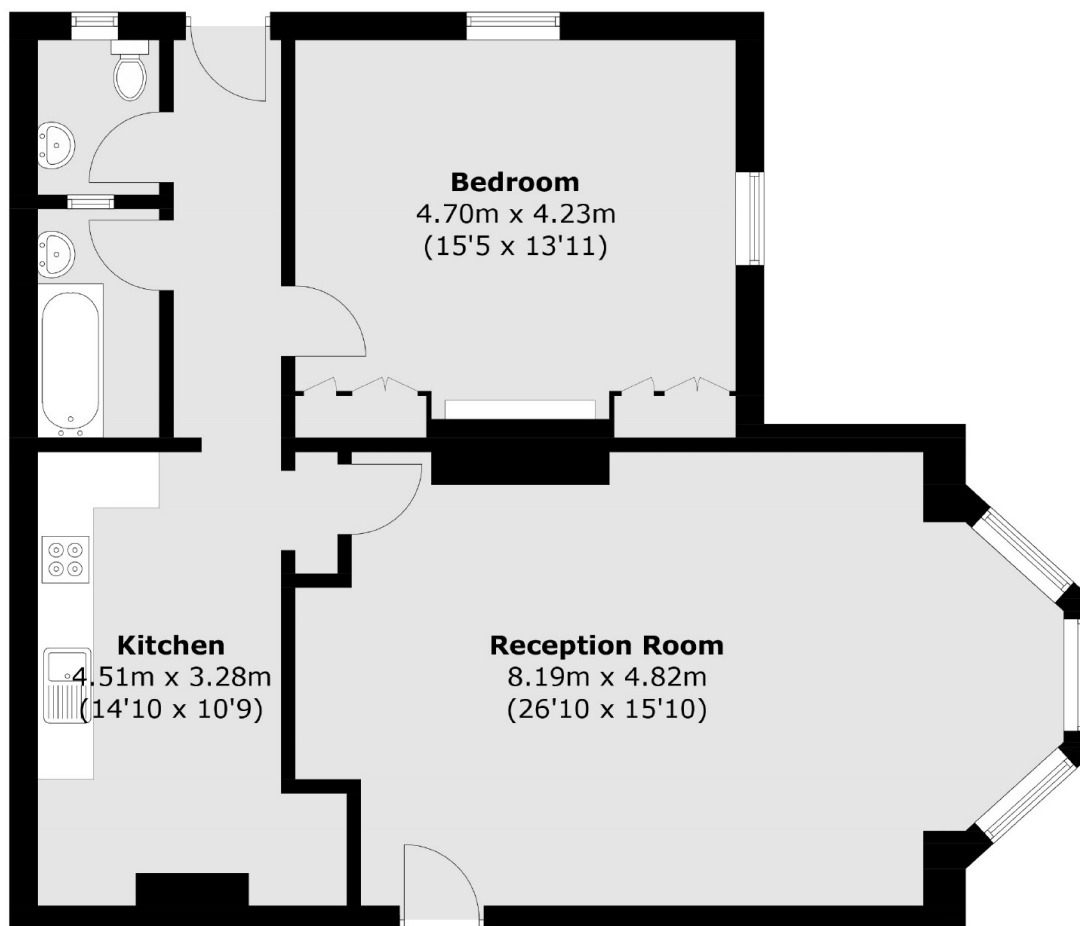
A well presented one double bedroom apartment situated on the raised ground floor of a period conversion. This property has over 890 sq .ft of accommodation with a large reception room, high ceilings and off-street parking.

Riverdale Road is a tree-lined residential road and is superbly-located moments from the River Thames with a short river-walk to Richmond.

Features

- One Double Bedroom
- Large Reception Room
- Period Features
- Off-Street Parking
- Great Location
- No Onward Chain

Riverdale Road, East Twickenham, TW1



Total area (approx.): 82.8 sq. m (891.2 sq. ft)