

Lower Square, TW7

£2,250 Per calendar month

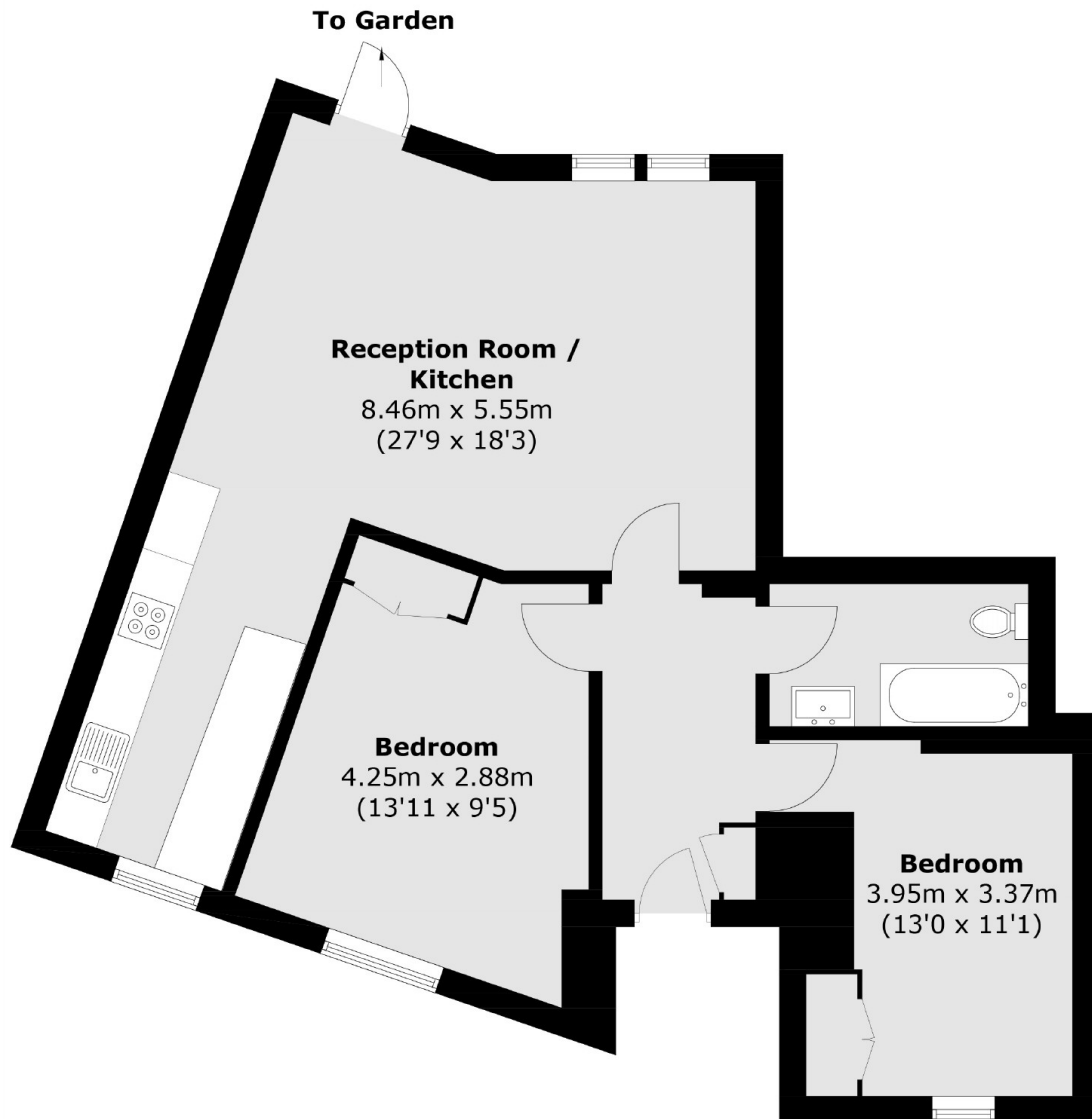
Located in a riverside development is this unique two bedroom apartment in Old Isleworth. Finished to an exceptional standard throughout the property has two double bedrooms, a modern bathroom, newly fitted kitchen and a private patio to the rear. The property comes with an allocated parking space in a secure gated communal area and has direct access to the river and towpath.

Within close proximity to the riverside pubs and restaurants in Old Isleworth, moments from the towpath to the extensive amenities available in Richmond town centre and a few hundred yards of Syon Park.

Features

- Private Entrance
- Brand New Kitchen
- Two Bedrooms
- Private Patio
- Allocated Parking
- Access to The River Thames

Lower Square, Old Isleworth, TW7



Total area (approx.): 74.7 sq. m (804.0 sq. ft)