



## Sidney Road, TW1

£649,950

A beautifully presented ground floor end terrace two bedroom maisonette which is rarely available in the heart of St. Margarets village. With a private front and south-facing rear garden and high specification, this property is not to be missed.

Sidney Road is a well regarded tree-lined residential street in the heart of St Margarets village. Moor Mead Park is at the end of road and St Margarets village is only 0.2 miles away.

### Features

- Maisonette
- Period Property
- Two Bedrooms
- South-Facing Garden
- Beautifully Presented
- Fantastic Location



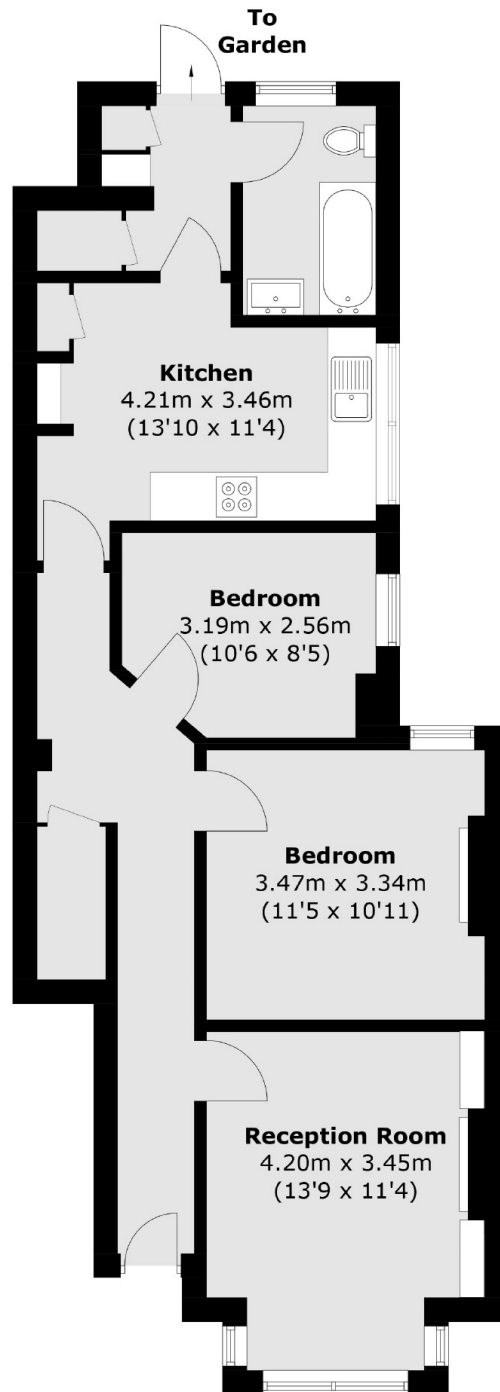
## Sidney Road, TW1

Enter on the ground floor, via your own front door and there is a spacious reception room at the front of the property which has a feature fireplace, bay window and plantation shutters. There are two bedrooms in the middle of the property and at the rear there is a beautifully refurbished kitchen/diner which leads through to a utility room and luxuriously appointed family bathroom. There is direct access to a substantial private south facing garden which is mainly laid to lawn.

This property has been refurbished to an impeccable standard throughout, with engineered oak flooring and a wealth of period charm and character.



# Sidney Road, , TW1



Total area (approx.): 68.0 sq. m (731.9 sq. ft)