



## London Road, TW1

£2,750 Per calendar month

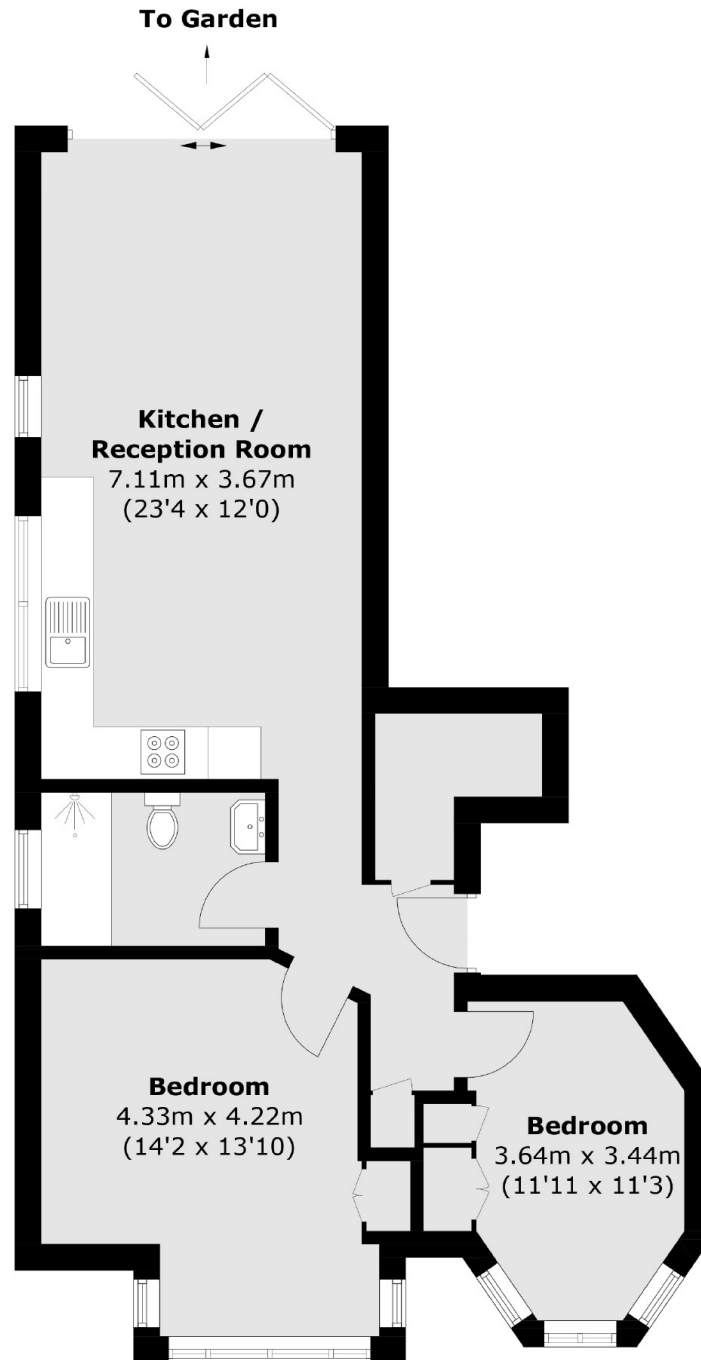
This two bedroom garden flat is ideal for a professional couple or small family. With a modern kitchen, wood floors throughout, a luxury shower room and secure residents parking.

London Road is only moments from St. Margarets high street, mainline station and Twickenham Station. There is a great selection of independent shops, cafés, restaurants and pubs nearby.

### Features

- Two Bedrooms
- Open-Plan Living
- Modern Kitchen
- Rear Garden
- Wood Floors
- Parking Space

# London Road, Twickenham, TW1



Total area (approx.): 64.0 sq. m (688.9 sq. ft)