



Algar Close, TW7

£975,000

This four double bedroom end of terrace home oozes style and sophistication. Measuring over 1500 sq. Ft over three floors, there is plenty of space for the whole family. This property is not to be missed.

Stainton Terrace is situated in a small modern development of just six houses within Algar Close in Old Isleworth. There is a great selection of local schools and easy access to transport links and the River Thames.

Features

- 1500 Sq. Ft
- Off-Street Parking
- Four Double Bedrooms
- Three Bathrooms
- Air Conditioning
- 3 Year Guarantee Remaining



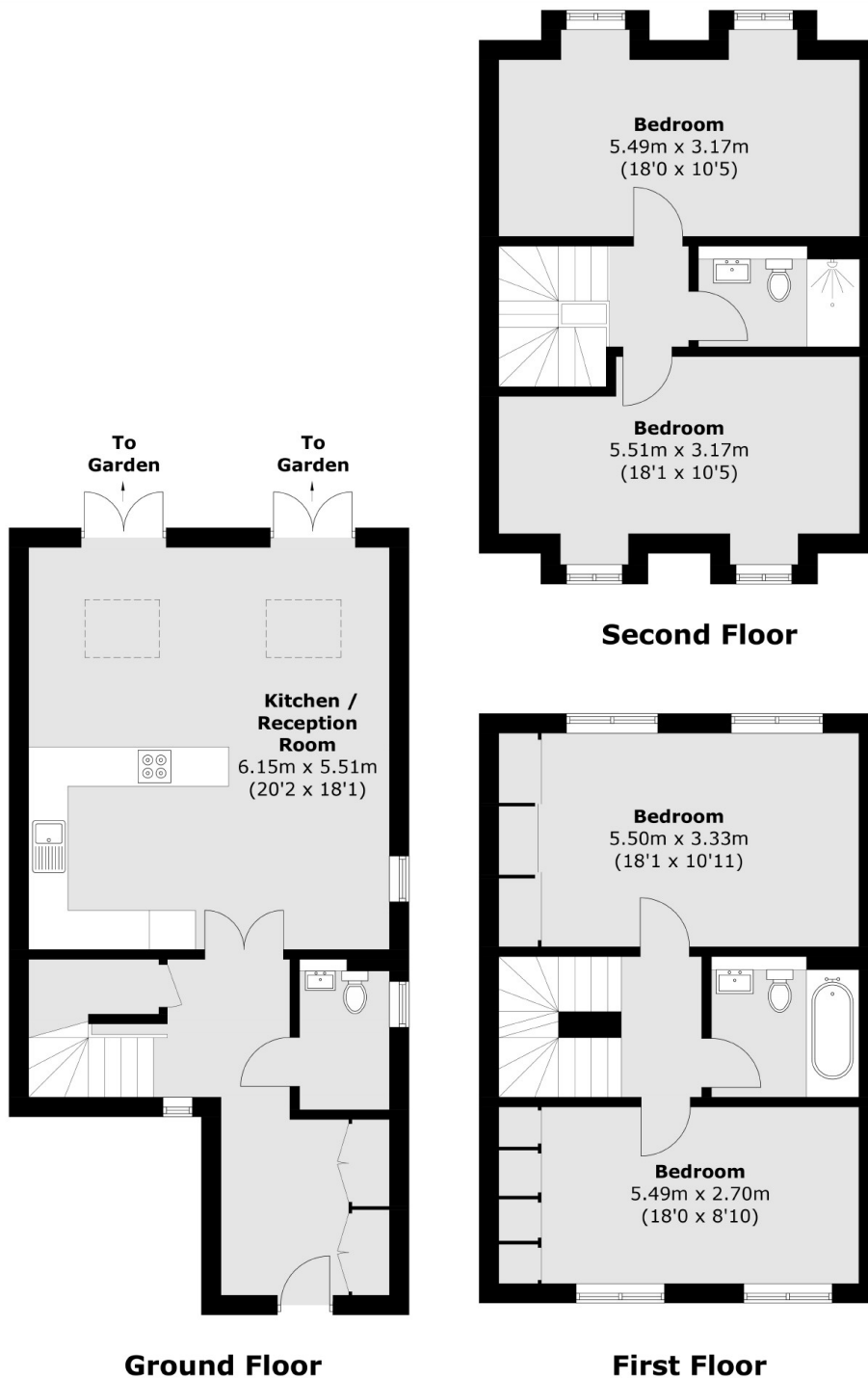
Algar Close, TW7

On the ground floor is a large entrance hall, a cloakroom and an impressive open plan kitchen/dining/family room with byfold doors onto the garden. Upstairs has four double bedrooms and two bathrooms, all of generous proportions.

Being an end of terrace property, the rear garden is wider than expected. It has been thoughtfully landscaped and comes with a water feature, a patio, a large storage shed to the side of the house and side access.



Algar Close, Isleworth, TW7



Total area (approx.): 142.8 sq. m (1,537.1 sq. ft)