



## Union Lane, TW7

£279,950

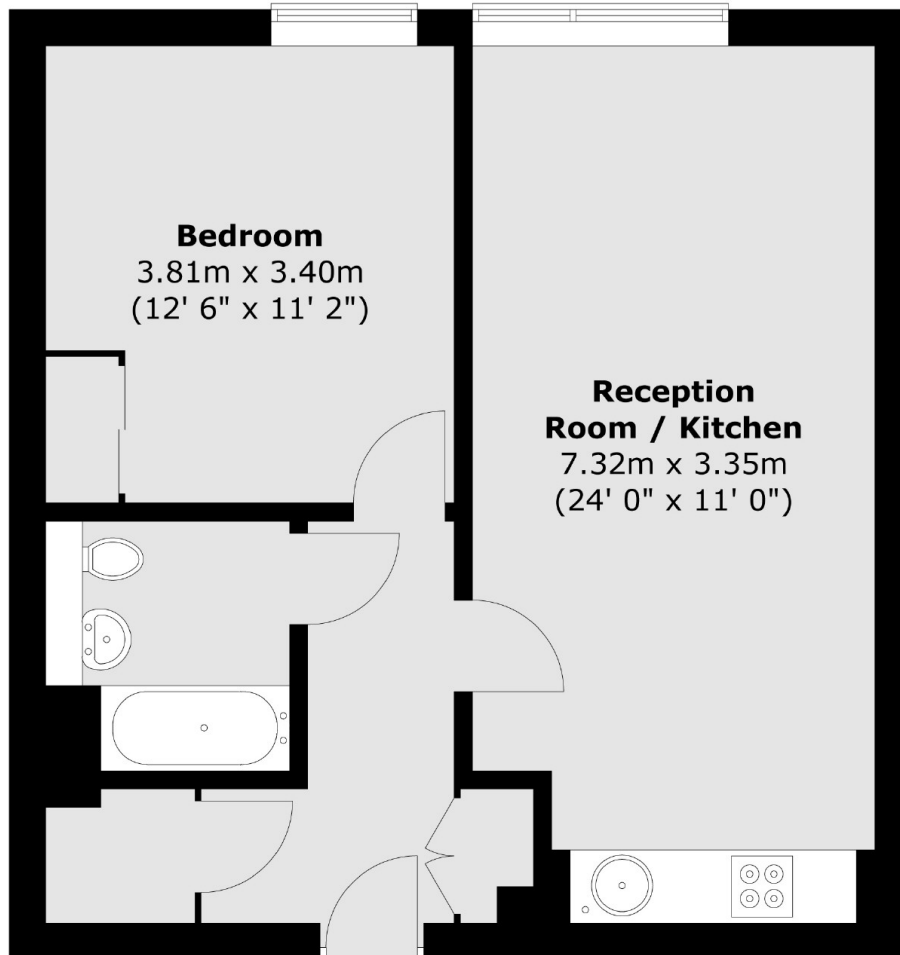
A modern first floor one bedroom purpose built apartment offered to the market with no onward chain. The building is lift serviced and the property has the benefit of allocated parking.

Union Lane is a popular modern development situated within 0.5 miles of Syon Lane Station with its links to London Waterloo. The green open space of Syon Park is 50 feet away and the River Thames with its tow path walks into Richmond is only 0.4 miles away.

### Features

- One Double Bedroom
- Modern Development
- Lift Serviced
- Fantastic Location
- No Onward Chain
- Allocated Parking

# Union Lane, Old Isleworth, TW7



Total area (approx.) : 50.7 sq. m (546 sq. ft)