



Cambridge Park, TW1

£2,350 Per calendar month

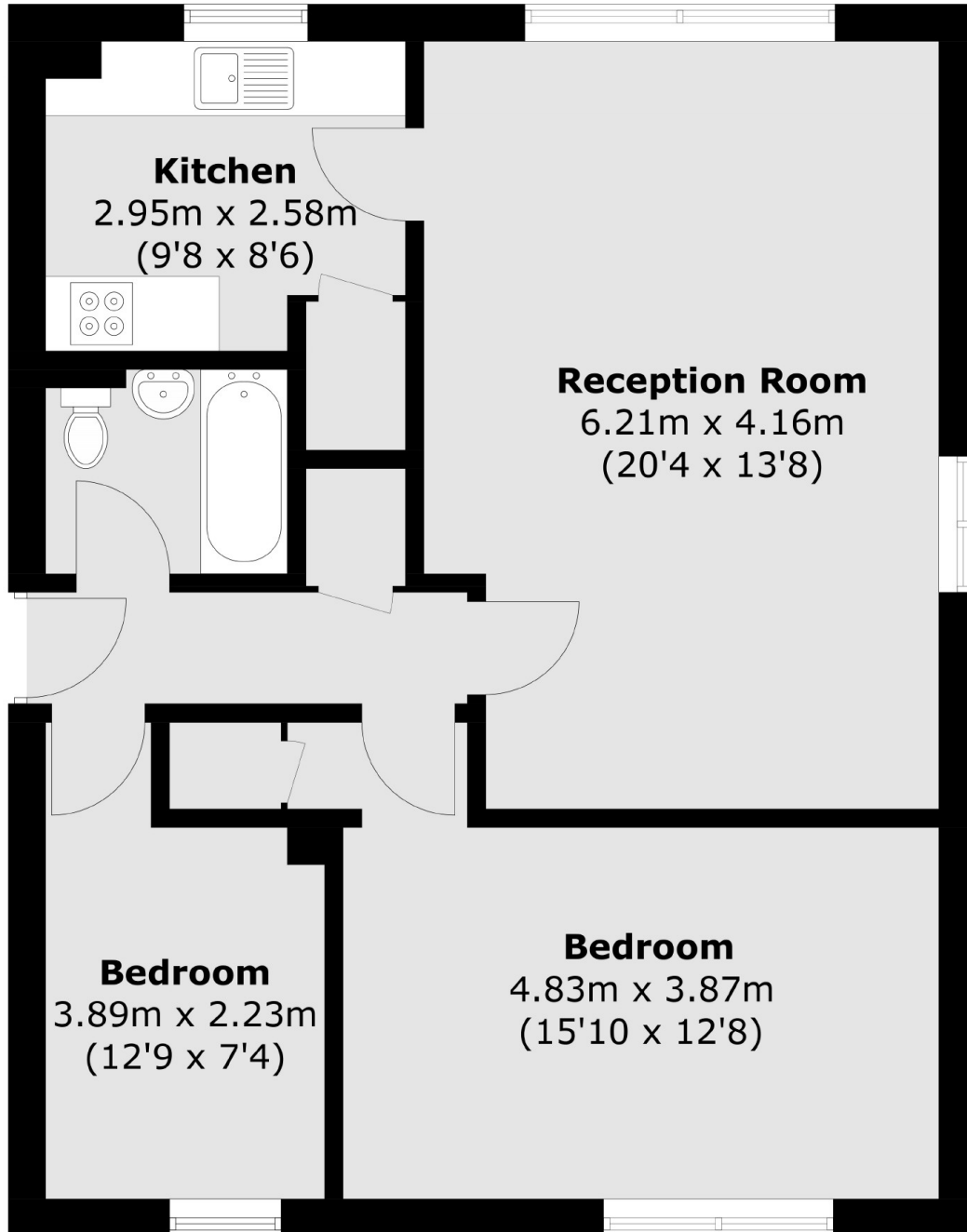
A two bedroom apartment set on a quiet residential road in East Twickenham. With an allocated underground parking space, plenty of storage throughout and bright and airy living space.

Cambridge Park is one of East Twickenham's premier roads, within a hundred yards of the River Thames and within a quarter of a mile of Richmond town centre with its amenities.

Features

Moments From The River
Wooden Flooring
Fully Fitted Kitchen
Two Bedrooms
Underground Parking Space
Ample Storage

Cambridge Park,
Twickenham, TW1



Total area (approx.): 67.4 sq. m (725.5 sq. ft)