



## Cole Park Gardens, TW1

£995,000

Situated in a quiet cul-de-sac is this rarely available three bedroom detached chalet bungalow backing onto the River Crane with pretty open views over the allotments.

Cole Park Gardens is only 0.7 miles away from Twickenham Station with its fast service to London Waterloo. St Margarets village with its shops, cafés and restaurants is only 0.8 miles away.

### Features

- Detached House
- Three Bedrooms
- Off-Street Parking
- Scope To Extend (STPP)
- Garage
- Driveway





## Cole Park Gardens, TW1

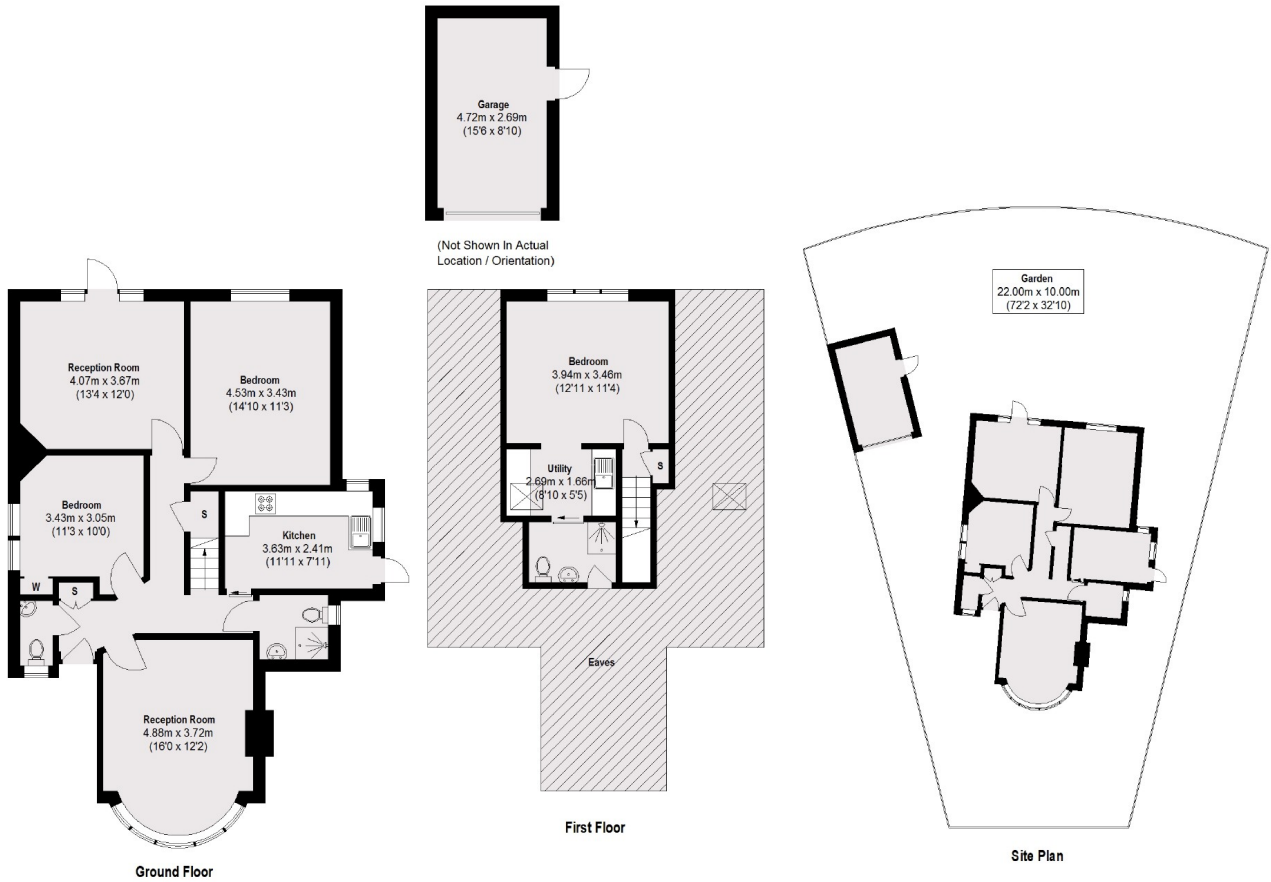
The driveway provides plenty of parking for several cars, there is also a detached garage and side access to the garden. The property comes with huge scope to significantly extend and modernise on all floors or simply enjoy the property as it currently stands.

Accommodation is versatile and flexible, you can arrange the bedrooms and reception rooms to suit you. There are two reception rooms, two shower rooms, a separate WC and a fitted kitchen with a door onto the garden. The private and secluded garden is a fantastic size and comes with a fully powered shed/hobby room.





# Cole Park Gardens, St Margarets, TW1



Total area (approx.) (Excluding Eaves) : 110.71 sq. m (1192 sq. ft.)  
Garage : 13.10 sq. m (141 sq. ft.)