



Cambridge Road, TW1

£869,950

A fantastic opportunity to acquire a three bedroom house, which offers an abundance of potential including the possibility to extend STPP, off street parking and no onward chain.

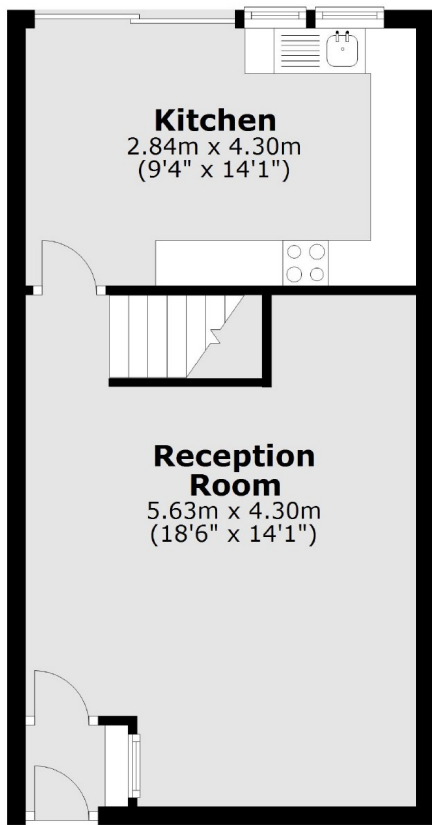
Cambridge Road which is one of East Twickenham's premier roads, within 0.2 miles from the River Thames and within a quarter of a mile of Richmond town centre with its amenities.

Features

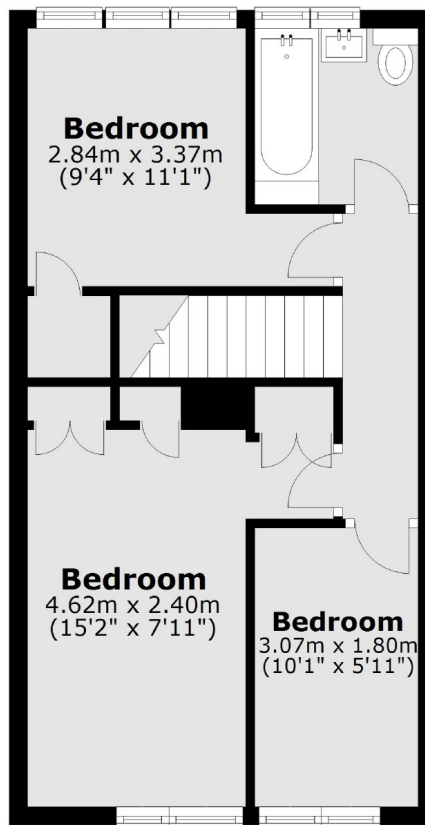
- Three Bedrooms
- No Onward Chain
- Potential To Extend STPP
- Allocated Off-Street Parking
- Fantastic Location
- Good Size Garden

Cambridge Road, East Twickenham, TW1

Ground Floor



First Floor



Total area: approx. 73.7 sq. metres (793.3 sq. feet)