



St. Margarets Grove, TW1
£1,399,950

Dexters



St. Margarets Grove, TW1

Perfectly located in St. Margarets village, is this absolutely stunning four double bedroom Victorian family home. The house is deceptively spacious and must be viewed to be fully appreciated.

This stylish home is wider than the average and you can feel the extra space immediately when entering the hallway. The large through lounge has bespoke fitted units, a feature fireplace and Crittall double doors which lead onto the fantastic eat-in kitchen fully fitted with bespoke cupboards and a central island.

Upstairs are three double bedrooms and a family bathroom. The loft has been converted and provides a spacious double bedroom and a luxury en suite shower room. The landscaped garden is well designed with privacy, style and practicality in mind. There is a large patio area surrounded by raised beds, lawn and a recently fitted luxury garden room.

St. Margarets Grove is an excellent location in the heart of the village within excellent school catchment areas. Everything you need is nearby shops, cafés, restaurants, St. Margarets Station and Moor Mead Park at the bottom of the road.

Features

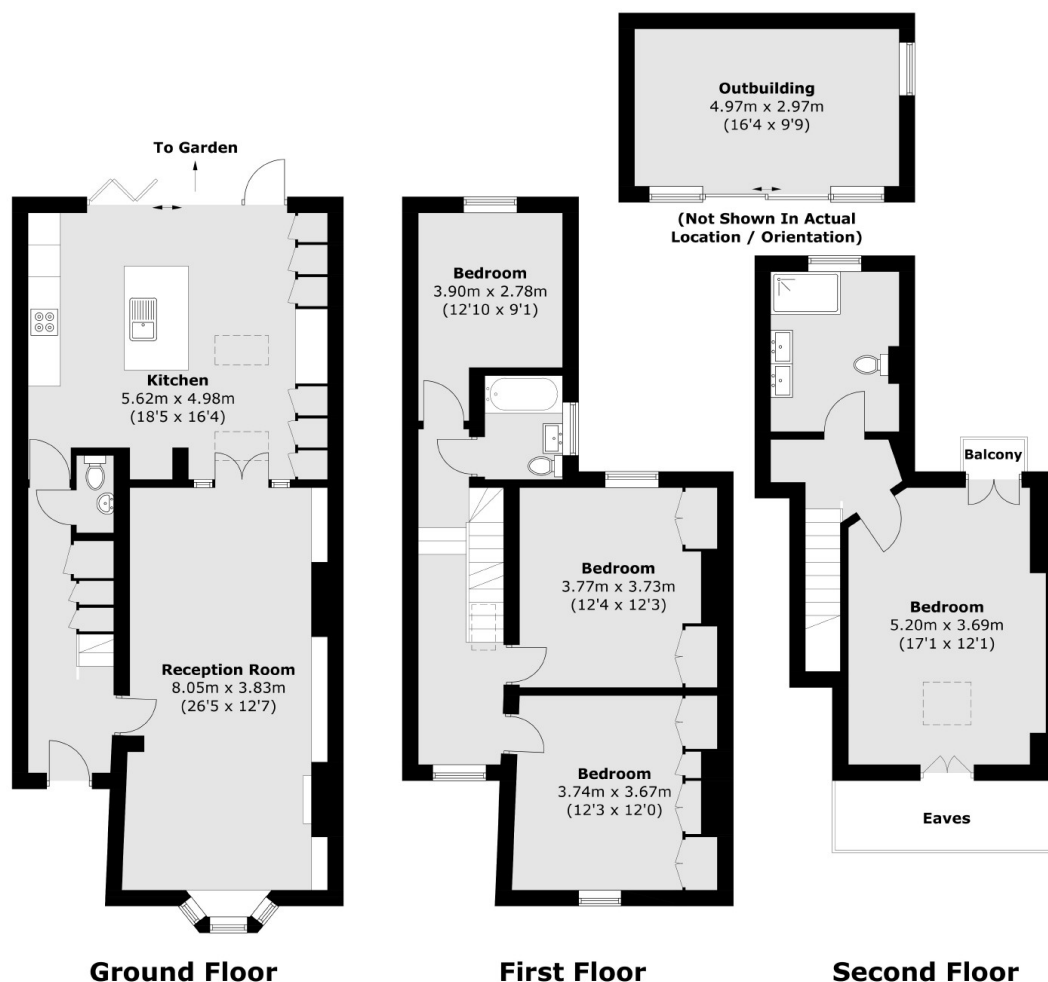
- Victorian
- Four Double Bedrooms
- Excellent Condition
- Downstairs WC
- Two Bathrooms
- Garden Room







St. Margarets Grove, St Margarets, TW1



Total area (approx.): 152.2 sq. m (1,638.2 sq. ft)
(Excluding Eaves)

Outbuilding area (approx.): 15.0 sq. m (161.4 sq. ft)

Balcony area (approx.): 0.7 sq. m (7.5 sq. ft)