

Mill Plat
Isleworth, TW7

Dexters



About the property

An impressive period property in a secure gated development with a picturesque garden overlooking The River Crane.

The grand entrance hall leads to an exceptional family room with high ceilings, large sash windows and a feature fireplace. Additionally, there is a bay-fronted reception room and guest WC. The lower ground floor features a stylish open plan kitchen and dining area, utility room, shower room and another reception room.

Upstairs, the principal bedroom offers a luxurious en suite and walk-in dressing room, with two more double bedrooms and a family bathroom on the first floor. The top floor includes three further spacious bedrooms, one with an en suite and a family bathroom.

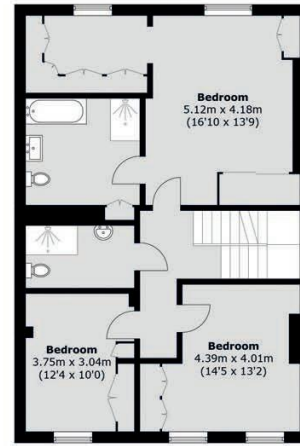
To the rear, there is a generous garden with a patio and outdoor kitchen, ideal for entertaining. The garden leads onto a landscaped communal garden backing onto the river.

Key features

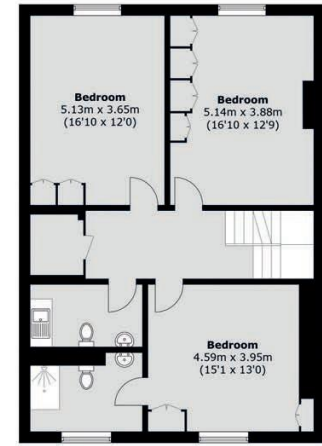
Six Double Bedrooms
Five Bathrooms
Beautiful Family Home
Impressive Interiors
River Views
Gated Development



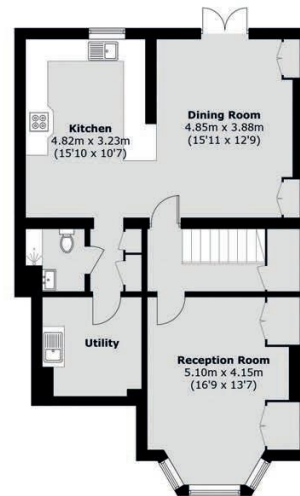




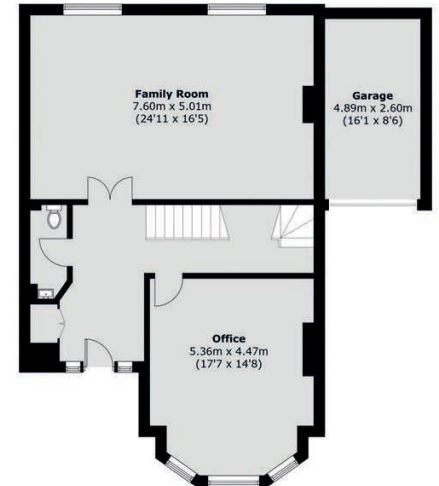
First Floor



Second Floor



Lower Ground Floor



Ground Floor

TOTAL APPROX. FLOOR AREA 3,605.9 SQ. FT (355 SQ. M)
 GARAGE 136.7 SQ. FT (12.7 SQ. M)

Energy Rating: C. We aim to make our particulars both accurate and reliable. However they are not guaranteed; nor do they form part of an offer or contract. If you require clarification on any points then please contact us, especially if you're traveling some distance to view. Please note that appliances and heating systems have not been tested and therefore no warranties can be given as to their good working order.



Dexters St Margarets
1 Chertsey Road,
London, TW1 1LR
020 8744 9700

Dexters