



Cambridge Park, TW1

£649,950

Dexters



Cambridge Park, TW1

Situated in the desirable Cambridge Park area of East Twickenham is this stylish three bedroom apartment. This gorgeous property comes with a garage and a share of the freehold. We love the pretty leafy green views that surround the property.

On entering the property you will notice the large spacious hallway that leads to all of the rooms. The property is offered in great condition throughout with beautiful parquet flooring, large spacious living/dining room, two double bedrooms and a further single room. The bathroom and kitchen have been replaced in recent years and look incredibly smart. If schools are on the agenda you are spoilt for choice, with an impressive selection of outstanding schools to choose from; Deer Park School, Orleans Park Secondary School and Orleans Primary School.

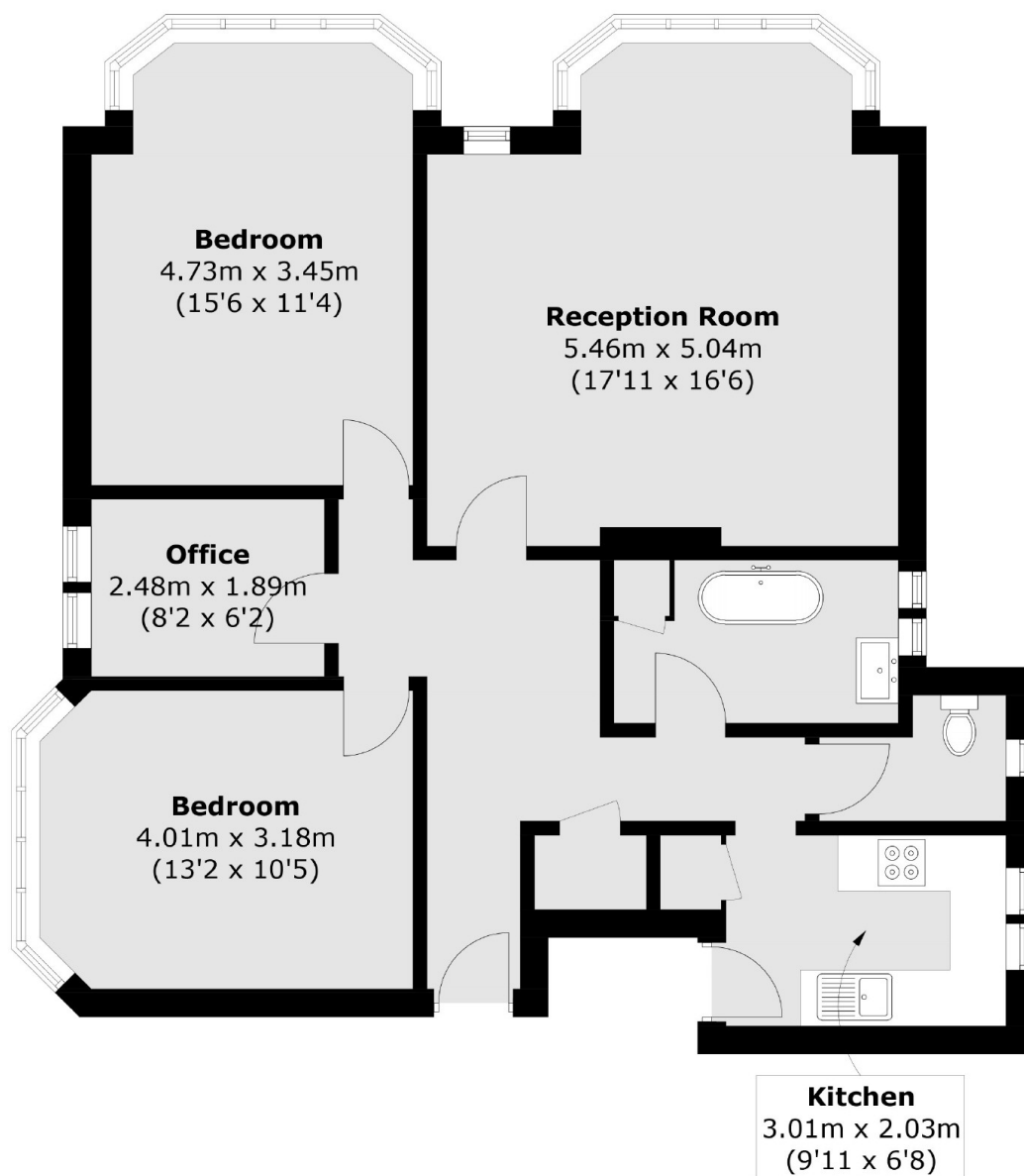
Cambridge Park Court is an excellent location in East Twickenham and within 300 meters of the tow path and River Thames. The block is 700 meters from Richmond Bridge and Richmond town centre with its mainline train station and fast service to London Waterloo.

Features

- Three Bedrooms
- Modern Bathroom
- W.C.
- Garage
- Unallocated Parking
- Share Of Freehold



Cambridge Park, East Twickenham, TW1



Total area (approx.): 88.8 sq. m (955.8 sq. ft)