



## St. Margarets Road, TW1

£2,900 Per calendar month

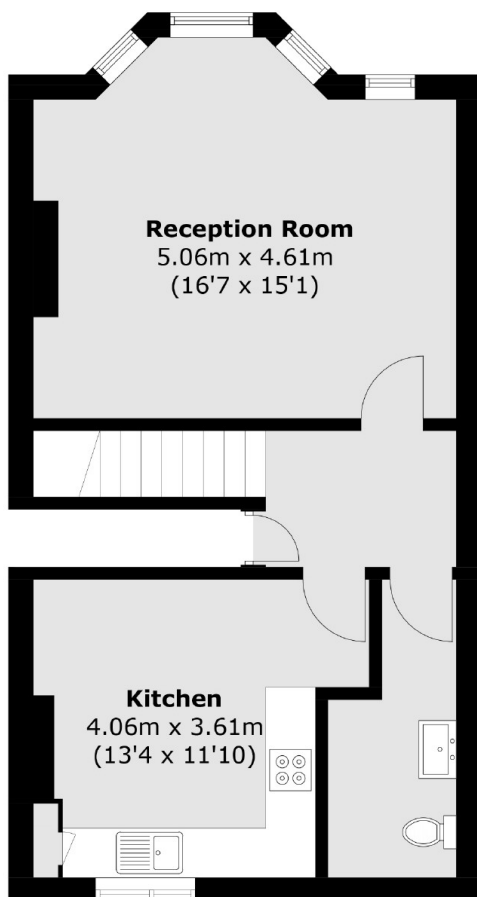
A two bedroom duplex apartment that has been finished to an exceptional standard throughout. With two en-suite bathrooms, downstairs WC and a bright and spacious living room with parquet flooring.

St. Margarets Road provides access to a selection of bars/restaurants, Richmond Bridge, the River Thames and open spaces of Moor Mead Gardens and historic Marble Hill Park.

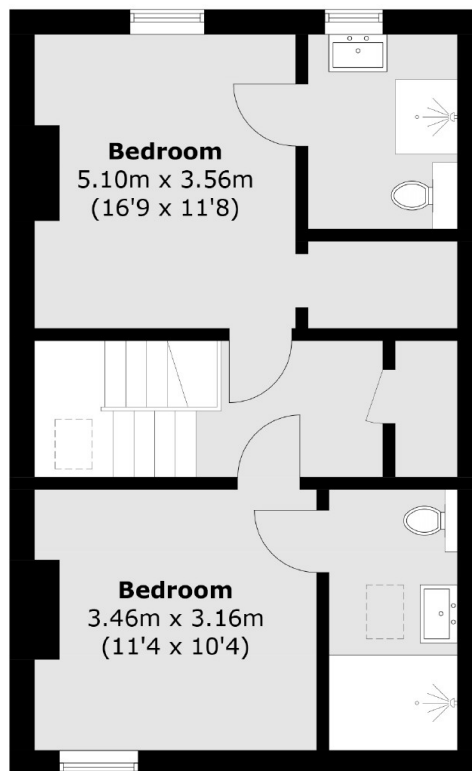
### Features

- Two Double Bedrooms
- Two En-Suite Bathrooms
- Walk In Wardrobe
- Split Level
- Modern Fitted Kitchen
- Available Now

# St. Margarets Road, St Margarets, TW1



**First Floor**



**Second Floor**

Total area (approx.): 90.9 sq. m (978.4 sq. ft)