



Twickenham Road, TW7

£449,950

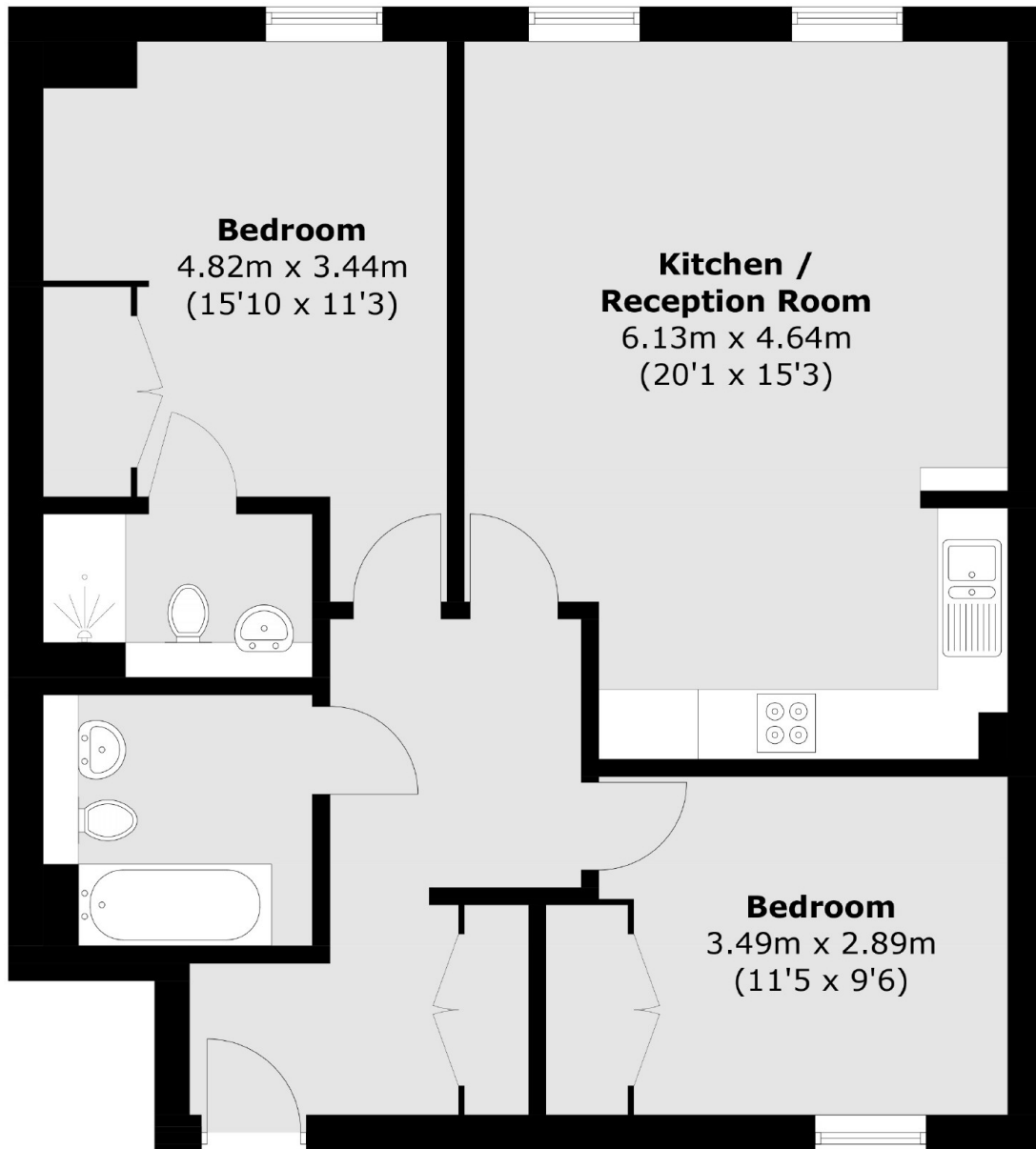
A beautiful two bedroom ground floor apartment within a secure gated development in Old Isleworth. This property has been refurbished throughout, comes with an allocated underground parking space and a long lease.

Holme Court a gated development located within easy reach of Old Isleworth high street with its wide range of local amenities and is moments from the River Thames with its tow paths to St Margarets and Richmond. Transport links include Isleworth Station and for the motorist the A316 offers access in and out of London.

Features

- Secure Gated Development
- Two Double Bedrooms
- Two Bathrooms
- Ground Floor
- Underground Parking
- Fantastic Location

Twickenham Road, Isleworth, TW7



Total area (approx.): 74.2 sq. m (798.7 sq. ft)

Dexters

St Margarets
1 Chertsey Road
St Margarets
TW11LR
Sales
020 8744 9400

Energy Rating: C. We aim to make our particulars both accurate and reliable. However they are not guaranteed; nor do they form part of an offer or contract. If you require clarification on any points then please contact us, especially if you're traveling some distance to view. Please note that appliances and heating systems have not been tested and therefore no warranties can be given as to their good working order.

 **RICS** | Regulated
Estate Agent
and Letting Agent

dexters.co.uk