



## Kings Terrace, TW7

£600,000

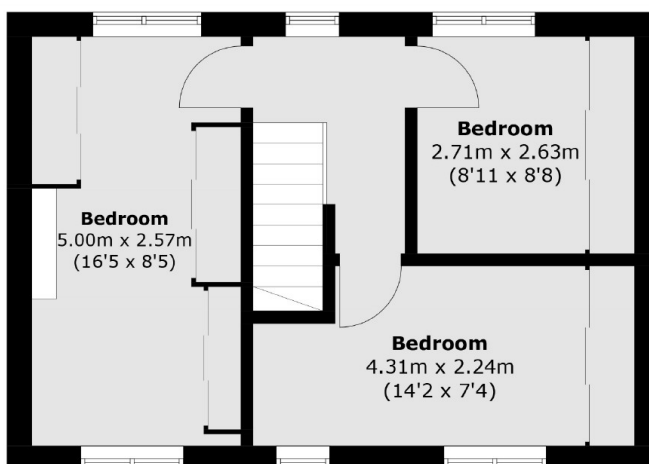
A fantastic three bedroom family home in the centre of Old Isleworth. Beautifully presented throughout, you will enjoy the perfectly landscaped south-east facing garden. This lovely family home is positioned within great school catchments, this house is not to be missed, EPC rating: C.

Kings Terrace is on Worple Road which is in the heart of Old Isleworth, within 0.5 miles of the River Thames with its tow path walks into Richmond. Twickenham mainline train station is within 1.1 miles with its fast links into London and 0.9 miles of St Margarets with its shops and cafés.

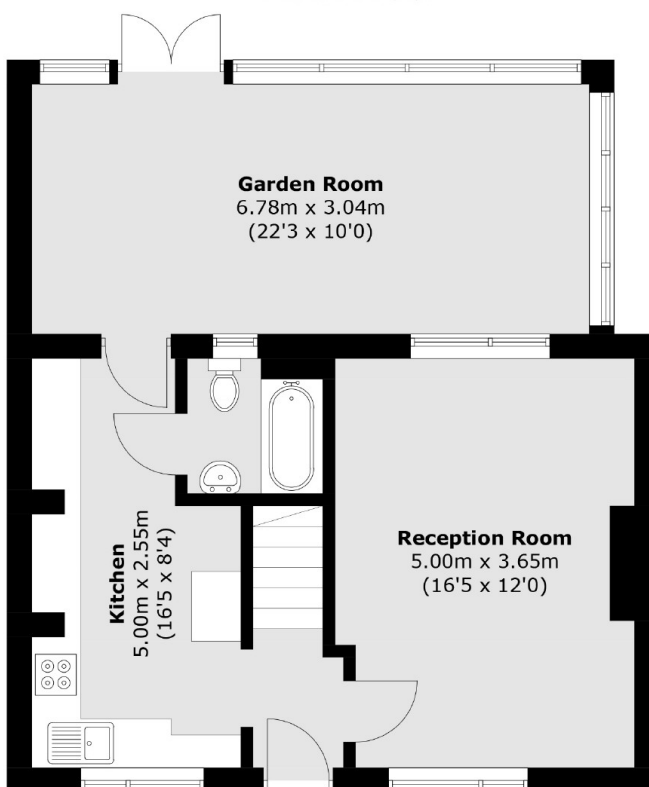
### Features

- Three Bedrooms
- Large Rear Garden
- Great Location
- Extension Potential STPP
- Well Presented
- Two Reception Rooms

# Kings Terrace, Isleworth, TW7



## First Floor



## Ground Floor

Total area (approx.): 96.5 sq. m (1,038.7 sq. ft)