



Twickenham Road, TW7

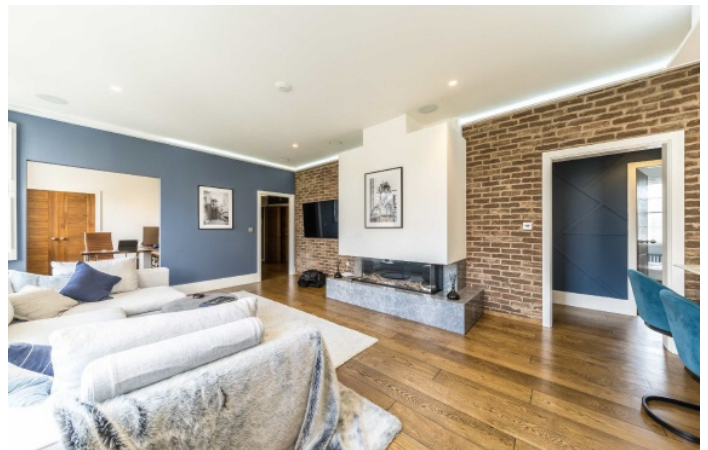
£700,000

This luxurious two/three bedroom first floor apartment has been thoughtfully renovated to an incredibly high standard throughout. Oozing style, sophistication and measuring over 1400 sq.ft this property must be viewed to be appreciated.

Holme Court is located on Twickenham Road in a secure gated development near Redlees Park and offers easy access to Isleworth, Twickenham and Richmond.

Features

- Two Double Bedrooms
- Study/Third Bedroom
- Two Bathrooms
- Master Suite
- Walk In Wardrobe
- Allocated Parking



Twickenham Road, TW7

Set within this prestigious period property and once lived in by Vincent Van Gogh, is this one of a kind conversion flat. We love the large open-plan living room/kitchen, feature gas fireplace, exposed brick walls, central kitchen islands complete with all the extras and more. The spacious study could easily be converted into a third double bedroom.

The well designed master suite is beautiful, enjoying a large dressing room with fitted walnut units, leading onto the fully tiled en suite shower room. Another bonus is the allocated off street parking, high end fixtures and fittings and the ample storage.



Twickenham Road, Isleworth, TW7



Total area (approx.): 133.0 sq. m (1,431.5 sq. ft)