



Northcote Road, TW1

£250,000

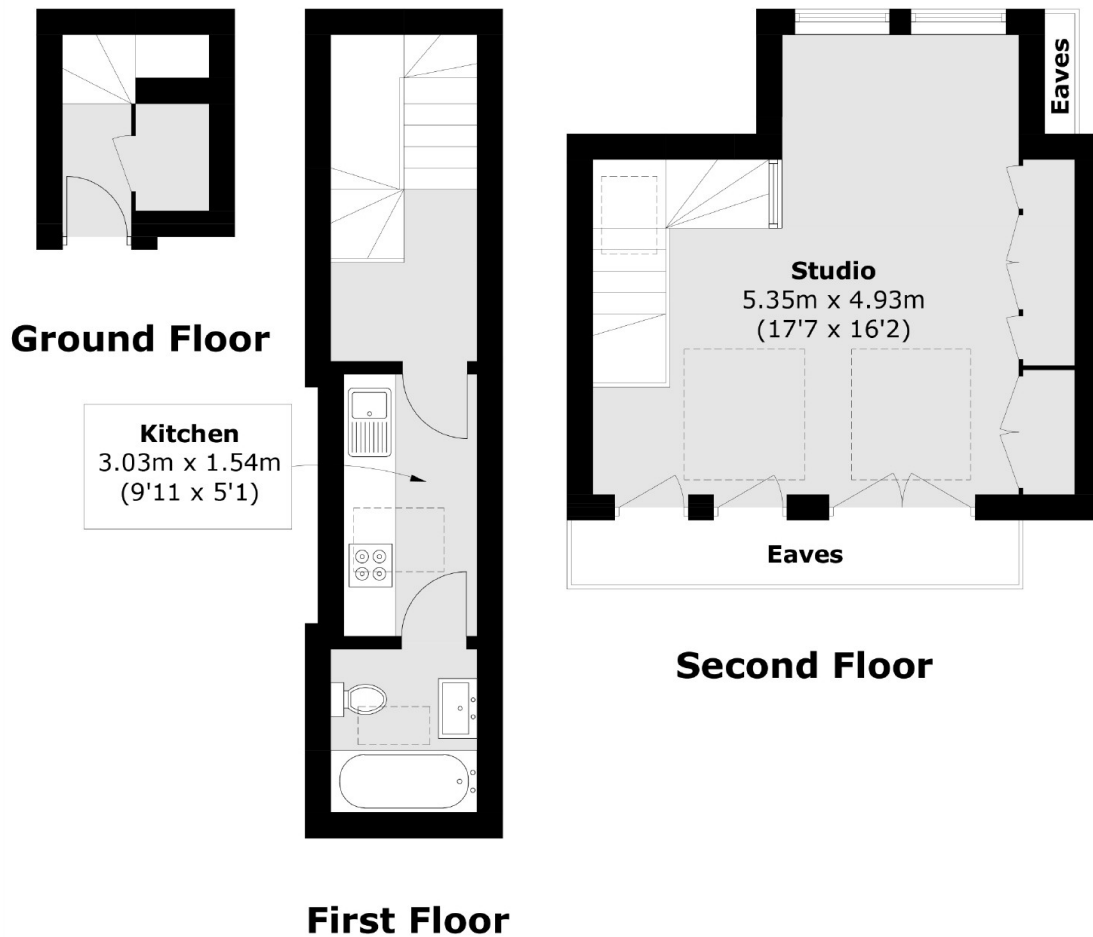
A beautifully presented split-level studio flat situated in a quiet residential road in St Margarets. Offered to the market with no onward chain and a long lease, this property is not to be missed out on.

Northcote Road is a popular residential road only 0.4 miles from the River Thames and its tow path walks into Richmond. St Margarets main line station and shops are only 0.6 miles away.

Features

- Split-Level Studio Flat
- Long Lease
- Top Floor
- No Onward Chain
- Quiet Residential Location
- Close To The River

Northcote Road, St Margarets, TW1



Total area (approx.): 42.8 sq. m (460.6 sq. ft)
(Excluding Eaves)