



## **Vivienne Close, TW1**

**£4,750** Per calendar month

**Dexters**



## Vivienne Close, TW1

A wonderful and contemporary four bedroom family home, with over 1400 sq. Ft of versatile accommodation, tucked away in a secluded cul-de-sac perfect for a growing family.

The ground floor offers two separate reception rooms, a spacious WC and a contemporary fully integrated kitchen/breakfast room also giving you access to the rear garden.

The first floor has three bedrooms, one of them offering an En suite bathroom and a family bathroom. The master bedroom and En suite bathroom in a classy loft extension has spectacular views of Richmond Hill.

Adding to the convenience this house has off-street parking and side access to the garden.

Vivienne Close is the perfect location if you are looking for a secluded spot yet just moments away from both St Margarets and Richmond town centre.

### Features

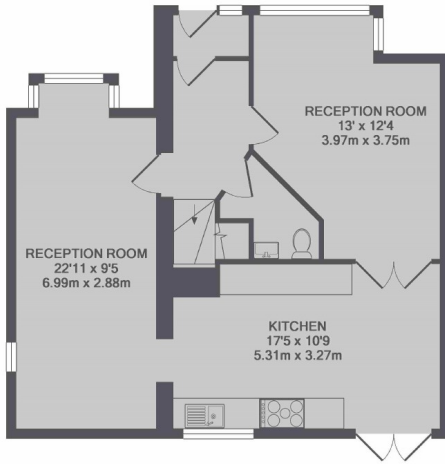
- Four Double Bedrooms
- Three Bathrooms
- Off-Street Parking
- Close To Excellent Schools
- Moments From Richmond
- Private Rear Garden



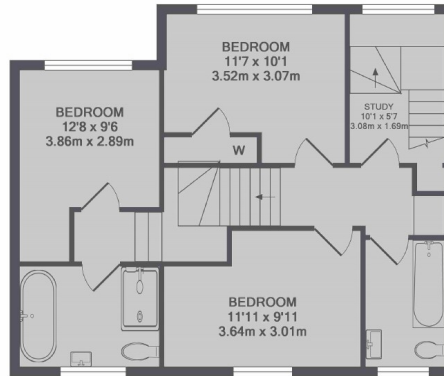




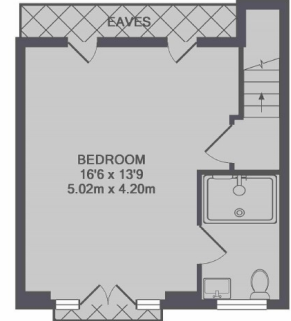
# Vivienne Close, Twickenham, TW1



GROUND FLOOR



1ST FLOOR



2ND FLOOR

TOTAL APPROX. FLOOR AREA 1617 SQ.FT. (150.2 SQ.M.)