



## Fairlawns, TW1

£939,950

Situated in a quiet cul-de-sac in the heart of East Twickenham, just moments from the shops in East Twickenham and Richmond Bridge, is this four double bedroom end of terrace modern family home.

Fairlawns is a small development within Cambridge Park, a superb location and place to live. Close to the local Marble Hill Park, Richmond town centre, Richmond high street and Richmond Park. The house is in a guaranteed catchment area for several OFSTED outstanding schools; primary and secondary. This house should be viewed immediately to avoid disappointment.

### Features

- Quiet Cul-De-Sac Location
- End Of Terrace
- Four Bedrooms
- South Facing Garden
- Bright And Spacious Accommodation



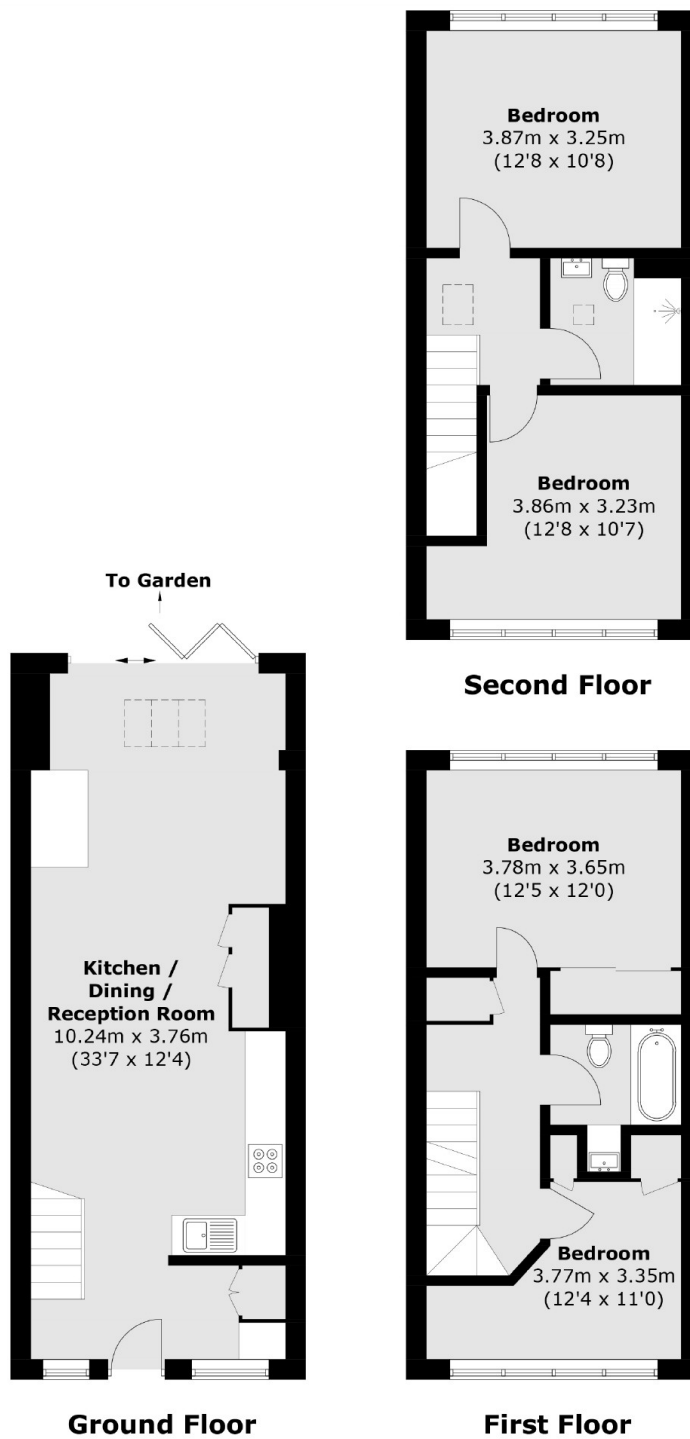
## Fairlawns, TW1

The ground floor is open plan with a useful porch area, a modern fitted kitchen with dining area and to the rear is a spacious living area. Upstairs there are four double bedrooms all with wooden flooring and two modern family bathrooms. The property features underfloor heating and modern windows.

With scope to extend the ground floor (STP) this is a fantastic opportunity for any buyer to secure a well proportioned house in a desirable location complete with a southerly facing garden and the added benefit of side access. There is also an electric car charging point and extra storage for bicycles.



# Fairlawns, East Twickenham, TW1



Total area (approx.): 105.9 sq. m (1,139.9 sq. ft)