



Talbot Road, TW7

£799,950

Dexters



Talbot Road, TW7

A superb three bedroom semi-detached Victorian house on an incredibly sought after road. With scope to extend on the ground floor STPP, this property is not to be missed. This lovely house is presented beautifully throughout and offers a large private garden.

As you enter on the ground floor there is a front formal reception room which has been completely redecorated, has a beautiful bay window and a feature fireplace.

Under the stairs there is a downstairs WC and some storage. At the rear of the house there is another reception room which then leads onto the modernised kitchen, which can still be extended further STPP if desired. As well as an extra reception space at the end of the kitchen, ideal for a dining area or play space.

On the first floor there are two double bedrooms and a very well proportioned family bathroom. The top floor has the third bedroom and another shower room. There are ample period features throughout this lovely Victorian house. The garden is mainly laid to lawn and is larger than average for the area.

Located on the borders of St Margarets and is 0.6 miles from St Margarets village and less than a quarter of a mile from the River Thames and Old Deer Park. Richmond town centre is 1.5 miles away with its district line and shops.

Features

- Semi-Detached
- Potential To Extend STPP
- Three Bedrooms
- Period Features
- Beautifully Presented
- Victorian

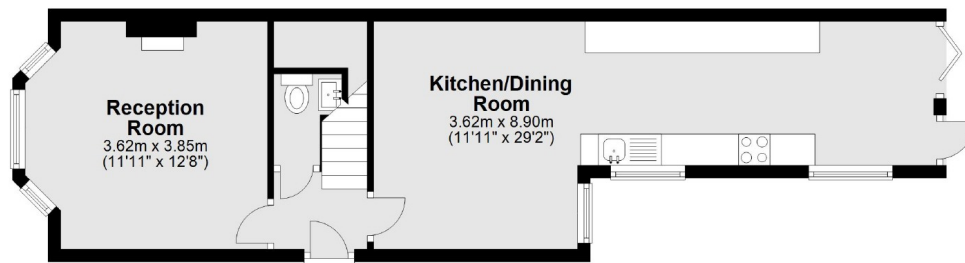




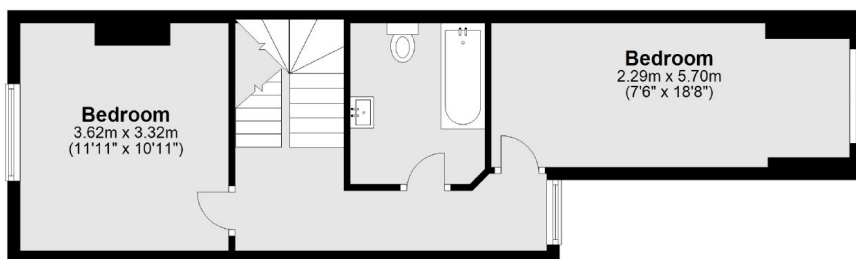


Talbot Road, Old Isleworth, TW7

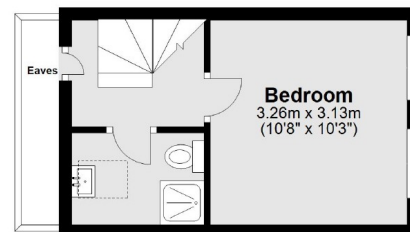
Ground Floor



First Floor



Second Floor



Total area: approx. 102.6 sq. metres (1104.2 sq. feet)