



Queens Terrace, TW7

£499,950

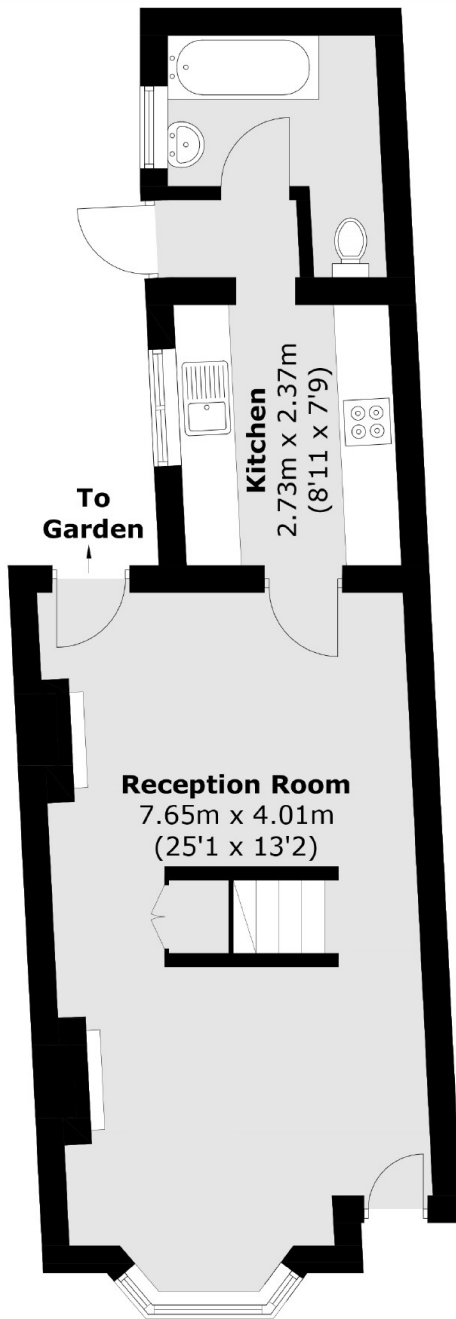
Ideally located in a quiet cul-de-sac is this classic two double bedroom two up two down Victorian cottage. The property offers excellent room proportions, a fully fitted kitchen, a white suite bathroom and a south facing courtyard garden. We love that there is potential to loft convert STPP, this is a house that can grow with your family.

Queens Terrace is a convenient location in the heart of Old Isleworth close to local schools and shops. The property is also within half a mile of the River Thames with its tow path walks to Richmond. And within a mile of St Margarets village and mainline station.

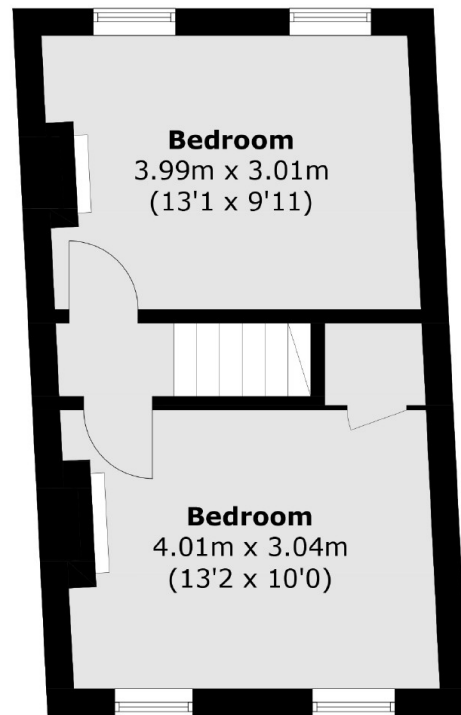
Features

Two Double Bedrooms
Living Room
Dining Room
Wood Burner Stove
South Facing Garden
Potential To Extend

Queens Terrace, Old Isleworth, TW7



Ground Floor



First Floor

Total area (approx.): 71.8 sq. m (772.8 sq. ft)