



Claremont Road, TW1

£1,995,000

A beautiful and rarely available five bedroom Edwardian family home with a south facing garden on one of St Margarets most prestigious roads. With outstanding primary and secondary schools nearby and Marble Hill Park located just around the corner this house is not to be missed out on.

Claremont Road is situated in the heart of St Margarets village and is walking distance to Marble Hill Park and the River Thames. Within 0.2 miles of the mainline train station and excellently located for outstanding schools, village shops, cafés and restaurants.

Features

- Edwardian Family Home
- Five Bedrooms
- Two Reception Rooms
- Extension Potential STPP
- South Facing Garden
- Excellent Location



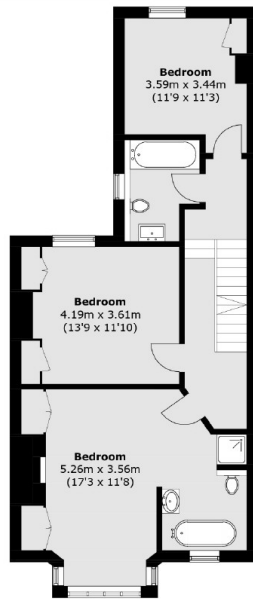
Claremont Road, TW1

Enter on the ground floor and there is a welcoming entrance hall which leads to a well-proportioned front formal living room with herringbone flooring and a feature fireplace. There are folding double doors that allow you to open up to a second reception room/dining room which has a second period fireplace and provides access to a decked area of the garden which is perfect for dining and entertaining. At the rear of the property there is a kitchen/dining room which leads to a WC and utility room at the back of the house. There is also access to a cellar and wine cellar which provides excellent storage. On the first floor there is a modern family bathroom and three good-sized bedrooms one of which is the master with a large En suite bathroom. The top floor continues to impress with two further double bedrooms with significant eaves storage.

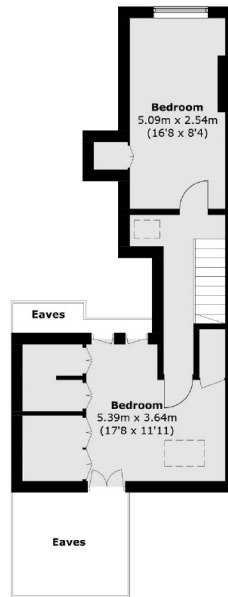
This property is beautifully presented throughout, has an array of period features and offers buyers potential to extend on the ground and second floor STPP and a large secluded south facing rear garden.



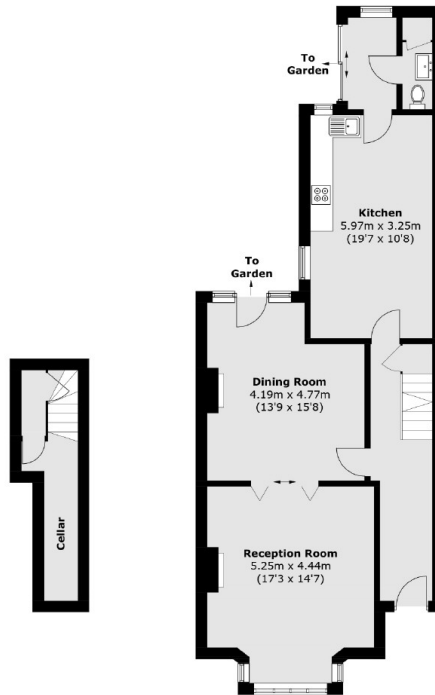
Claremont Road, St Margarets, TW1



First Floor



Second Floor



Lower Ground Floor

Ground Floor

Total area (approx.): 196.5 sq. m (2,115.0 sq. ft)
(Excluding Eaves)